

SUMO2/3/4 Polyclonal Antibody

catalog number: E-AB-12439

Note: Centrifuge before opening to ensure complete recovery of vial contents.

Description

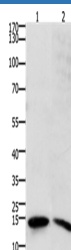
Reactivity	Human;Mouse;Rat
Immunogen	Synthetic peptide of human SUMO2/SUMO3/SUMO4
Host	Rabbit
Isotype	IgG
Purification	Affinity purification
Conjugation	Unconjugated
buffer	Phosphate buffered solution, pH 7.4, containing 0.05% stabilizer and 50% glycerol.

Applications

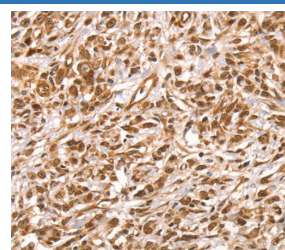
Recommended Dilution

WB	1:500-1:2000
IHC	1:100-1:300

Data



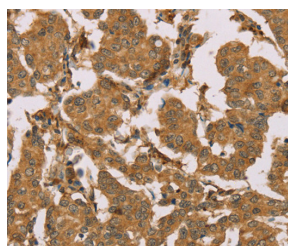
Western Blot analysis of Human ovarian cancer tissue and SKOV3 cell using SUMO2/3/4 Polyclonal Antibody at dilution of 1:800



Immunohistochemistry of paraffin-embedded Human colon cancer using SUMO2/3/4 Polyclonal Antibody at dilution of 1:100

Observed-MV: Refer to figures

Calculated-MV: 12 kDa



Immunohistochemistry of paraffin-embedded Human thyroid cancer using SUMO2/3/4 Polyclonal Antibody at dilution of 1:100

Preparation & Storage

Storage	Store at -20°C Valid for 12 months. Avoid freeze / thaw cycles.
Shipping	The product is shipped with ice pack, upon receipt, store it immediately at the temperature recommended.

Background

For Research Use Only

SUMO2/3/4 Polyclonal Antibody

catalog number: E-AB-12439



This gene encodes a protein that is a member of the SUMO (small ubiquitin-like modifier) protein family. It functions in a manner similar to ubiquitin in that it is bound to target proteins as part of a post-translational modification system. However, unlike ubiquitin which targets proteins for degradation, this protein is involved in a variety of cellular processes, such as nuclear transport, transcriptional regulation, apoptosis, and protein stability. It is not active until the last two amino acids of the carboxy-terminus have been cleaved off. Numerous pseudogenes have been reported for this gene. Alternate transcriptional splice variants, encoding different isoforms, have been characterized.

For Research Use Only

A Reliable Research Partner in Life Science and Medicine
Tel: 400-999-2100

Email: techsupport@elabscience.cn

Web: www.elabscience.cn

Rev. V1.9