

GK1 Polyclonal Antibody

catalog number: E-AB-11273

Note: Centrifuge before opening to ensure complete recovery of vial contents.

Description

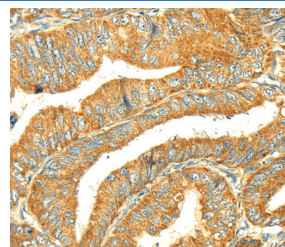
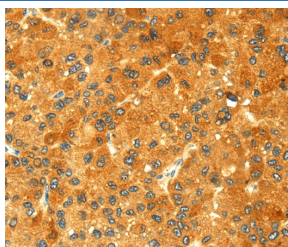
Reactivity	Human;Mouse;Rat
Immunogen	Recombinant protein of human GK
Host	Rabbit
Isotype	IgG
Purification	Affinity purification
Buffer	Phosphate buffered solution, pH 7.4, containing 0.05% stabilizer and 50% glycerol.

Applications

Recommended Dilution

IHC	1:100-1:300
------------	-------------

Data



Immunohistochemistry of paraffin-embedded Human liver cancer tissue using GK1 Polyclonal Antibody at dilution 1:60

Immunohistochemistry of paraffin-embedded Human colon cancer tissue using GK1 Polyclonal Antibody at dilution 1:60

Preparation & Storage

Storage	Store at -20°C Valid for 12 months. Avoid freeze / thaw cycles.
Shipping	The product is shipped with ice pack, upon receipt, store it immediately at the temperature recommended.

Background

The protein encoded by this gene belongs to the FGGY kinase family. This protein is a key enzyme in the regulation of glycerol uptake and metabolism. It catalyzes the phosphorylation of glycerol by ATP, yielding ADP and glycerol-3-phosphate. Mutations in this gene are associated with glycerol kinase deficiency (GKD). Alternatively spliced transcript variants encoding different isoforms have been found for this gene.

For Research Use Only