

PE/Cyanine5 Anti-Human HLA-A2,B7 Antibody[BB7.6]

Catalog Number: AN00634G

Note: Centrifuge before opening to ensure complete recovery of vial contents.

Description

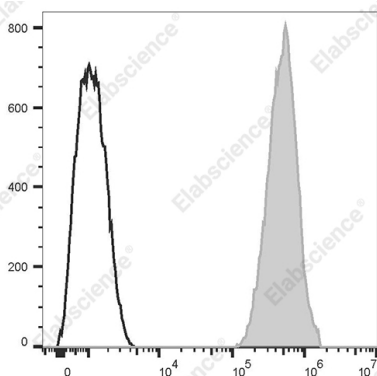
Reactivity	Human
Host	Mouse
Isotype	Mouse IgG1
Clone No.	BB7.6
Isotype Control	PE/Cyanine5 Mouse IgG1, κ Isotype Control[MOPC-21] [Product E-AB-F09792G]
Conjugation	PE/Cyanine 5
Conjugation Information	PE/Cyanine5 is designed to be excited by the Blue (488 nm), Green (532 nm) and yellow-green (561 nm) lasers and detected using an optical filter centered near 670 nm (e.g., a 690/50 nm bandpass filter).
Storage Buffer	Phosphate buffered solution, pH 7.2, containing 0.09% stabilizer and 1% protein protectant

Applications

Recommended usage

FCM	Each lot of this antibody is quality control tested by flow cytometric analysis. The amount of the reagent is suggested to be used 5 μL of antibody per test (million cells in 100 μL staining volume or per 100 μL of whole blood). Please check your vial before the experiment. Since applications vary, the appropriate dilutions must be determined for individual use.
------------	--

Data



Staining of normal human peripheral blood cells with PE/Cyanine5 Anti-Human HLA-A2,B7 Antibody[BB7.6] (filled gray histogram) or PE/Cyanine5 Mouse IgG1, κ Isotype Control (empty black histogram). Cells in the lymphocytes gate were used for analysis.

Preparation & Storage

Storage	Keep as concentrated solution. This product can be stored at 2-8°C for 12 months. Please protected from prolonged exposure to light and do not freeze.
Shipping	Ice bag

Antigen Information

Alternate Names	MHC-class I;HLA-B*07;HLA Class I histocompatibility antigen B alpha chain
------------------------	---

For Research Use Only

Uniprot ID

P04439

Gene ID

3105

Background

HLA-A2 is most common in Northern Asia and North America populations. MHC class I antigens associated with β 2-microglobulin are expressed by all human nucleated cells. MHC class I molecules are involved in presentation of antigens to CD8+ T cells, playing an important role in cell-mediated immune responses and tumor surveillance. HLA-B belongs to the HLA class I heavy chain paralogues. HLA-B7 is a serotype of HLA-B and one of the common HLA types. MHC class I heavy chains associate with β 2-microglobulin and are expressed on nearly all nucleated cells. MHC class I molecules are involved in the presentation of antigens to CD8+ T cells and thereby play an important role in cell-mediated immune responses and immune surveillance.

For Research Use Only