

Recombinant Human PSA/KLK3 Protein (aa 25-261, His Tag)

Catalog Number: PKSH032949

Note: Centrifuge before opening to ensure complete recovery of vial contents.

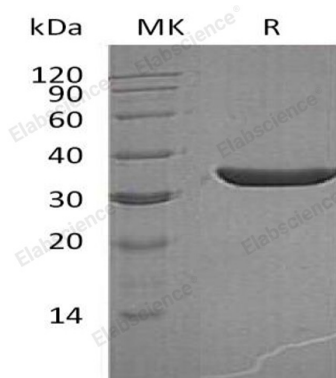
Description

Species	Human
Source	HEK293 Cells-derived Human PSA;KLK3 protein Ile25-Pro261, with an C-terminal His
Calculated MW	27.1 kDa
Observed MW	35 kDa
Accession	P07288
Bio-activity	Not validated for activity

Properties

Purity	> 95 % as determined by reducing SDS-PAGE.
Concentration	Subject to label value.
Endotoxin	< 1.0 EU per µg of the protein as determined by the LAL method.
Storage	Store at < -20°C, stable for 6 months. Please minimize freeze-thaw cycles.
Shipping	This product is provided as liquid. It is shipped at frozen temperature with blue ice/gel packs. Upon receipt, store it immediately at < -20°C.
Formulation	Supplied as a 0.2 µm filtered solution of 50mM Tris-HCl, 10mM CaCl ₂ , 150mM NaCl, 0.05% Brij 35, pH 7.5.

Data



> 95 % as determined by reducing SDS-PAGE.

Background

KLK3; also known as APS; is short for Prostate-specific antigen. It is a 261 aa. protein which belongs to the peptidase S1 family and Kallikrein subfamily. This protein has 5 isoforms produced by alternative splicing. It is a secreted protein and can form a heterodimer with SERPINA5 which can inhibit its activity. KLK3 is also strongly inhibited by Zn²⁺; 100 times more abundant in semen than in serum. This inhibition is relieved by exposure to semenogelins; which are avid zinc binders. KLK3 can hydrolyze semenogelin-1 thus leading to the liquefaction of the seminal coagulum.

For Research Use Only

Toll-free: 1-888-852-8623
Web: www.elabscience.com

Tel: 1-832-243-6086
Email: techsupport@elabscience.com

Fax: 1-832-243-6017