

## GPC6 Polyclonal Antibody

**catalog number: E-AB-16462**

**Note:** Centrifuge before opening to ensure complete recovery of vial contents.

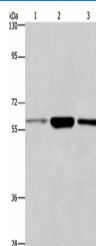
### Description

<b>Reactivity</b>	Human;Mouse
<b>Immunogen</b>	Synthetic peptide of human GPC6
<b>Host</b>	Rabbit
<b>Isotype</b>	IgG
<b>Purification</b>	Affinity purification
<b>Buffer</b>	Phosphate buffered solution, pH 7.4, containing 0.05% stabilizer and 50% glycerol.

### Applications

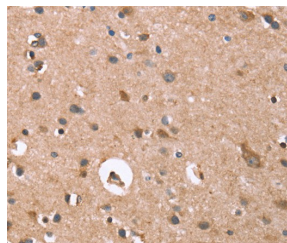
Applications	Recommended Dilution
<b>WB</b>	1:500-1:2000
<b>IHC</b>	1:50-1:200

### Data

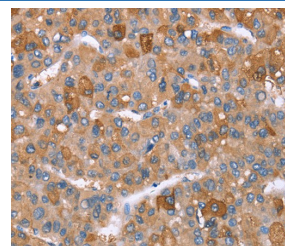


Western Blot analysis of K562,231,Human fetal liver tissue using GPC6 Polyclonal Antibody at dilution of 1:700

**Calculated-MV:63 kDa**

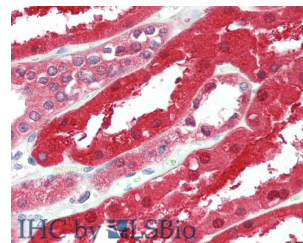


Immunohistochemistry of paraffin-embedded Human brain tissue using GPC6 Polyclonal Antibody at dilution 1:40



Immunohistochemistry of paraffin-embedded Human liver cancer tissue using GPC6 Polyclonal Antibody at dilution

**1:40**



Immunohistochemistry of paraffin-embedded Kidney tissue using GPC6 Polyclonal Antibody at dilution of 1:90(Elabscience Product Detected by Lifespan).

### Preparation & Storage

<b>Storage</b>	Store at -20°C Valid for 12 months. Avoid freeze / thaw cycles.
<b>Shipping</b>	The product is shipped with ice pack,upon receipt,store it immediately at the temperature recommended.

### Background

The glypicans comprise a family of glycosylphosphatidylinositol-anchored heparan sulfate proteoglycans, and they have been implicated in the control of cell growth and cell division. The glypican encoded by this gene is a putative cell surface coreceptor for growth factors, extracellular matrix proteins, proteases and anti-proteases.

### For Research Use Only