

MESDC2 Polyclonal Antibody

catalog number: E-AB-64868

Note: Centrifuge before opening to ensure complete recovery of vial contents.

Description

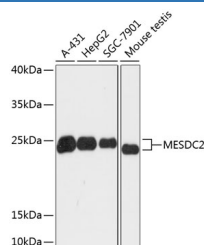
Reactivity	Human;Mouse
Immunogen	Recombinant fusion protein of human MESDC2 (NP_055969.1).
Host	Rabbit
Isotype	IgG
Purification	Affinity purification
Buffer	Phosphate buffered solution, pH 7.4, containing 0.05% stabilizer and 50% glycerol.

Applications

Recommended Dilution

WB	1:500-1:2000
-----------	--------------

Data



Western blot analysis of extracts of various cell lines using MESDC2 Polyclonal Antibody at dilution of 1:3000.

Observed-MW:26 kDa

Calculated-MW:26 kDa

Preparation & Storage

Storage	Store at -20°C Valid for 12 months. Avoid freeze / thaw cycles.
Shipping	The product is shipped with ice pack, upon receipt, store it immediately at the temperature recommended.

Background

MESD (Mesoderm Development LRP Chaperone) is a Protein Coding gene. Diseases associated with MESD include Osteogenesis Imperfecta, Type Xx and Epilepsy, Nocturnal Frontal Lobe, 2. Among its related pathways are Wnt / Hedgehog / Notch.

For Research Use Only