

## Recombinant Human FSTL1 Protein

**Catalog Number:** PKSH032454

**Note:** Centrifuge before opening to ensure complete recovery of vial contents.

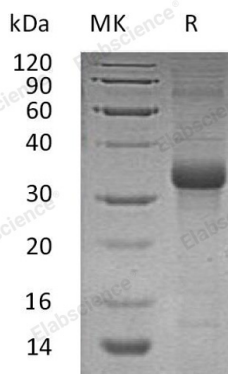
### Description

<b>Species</b>	Human
<b>Source</b>	E.coli-derived Human FSTL1 protein Glu21-Ile308
<b>Calculated MW</b>	33.0 kDa
<b>Observed MW</b>	33 kDa
<b>Accession</b>	Q12841
<b>Bio-activity</b>	Not validated for activity

### Properties

<b>Purity</b>	> 90 % as determined by reducing SDS-PAGE.
<b>Endotoxin</b>	< 1.0 EU per µg of the protein as determined by the LAL method.
<b>Storage</b>	Generally, lyophilized proteins are stable for up to 12 months when stored at -20 to -80°C. Reconstituted protein solution can be stored at 4-8°C for 2-7 days. Aliquots of reconstituted samples are stable at < -20°C for 3 months.
<b>Shipping</b>	This product is provided as lyophilized powder which is shipped with ice packs.
<b>Formulation</b>	Lyophilized from a 0.2 µm filtered solution of PBS, pH 7.4. Normally 5% - 8% trehalose, mannitol and 0.01% Tween 80 are added as protectants before lyophilization.
<b>Reconstitution</b>	Please refer to the specific buffer information in the printed manual. Please refer to the printed manual for detailed information.

### Data



> 90 % as determined by reducing SDS-PAGE.

### Background

Follistatin-Related Protein 1 (FSTL1) is a secreted protein that contains two EF-hand domains; one follistatin-like domain; one Kazal-like domain; and one WWFC domain. Its functional significance in physiological and pathological processes is not completely understood. However, FSTL1 is thought to modulate the action of some growth factors on cell proliferation and differentiation. FSTL1 maybe an autoantigen associated with rheumatoid arthritis.

### For Research Use Only