

Elab Fluor® Violet 450 Anti-Human CD20 Antibody[Rituximab]

Catalog Number: AN00776Q

Note: Centrifuge before opening to ensure complete recovery of vial contents.

Description

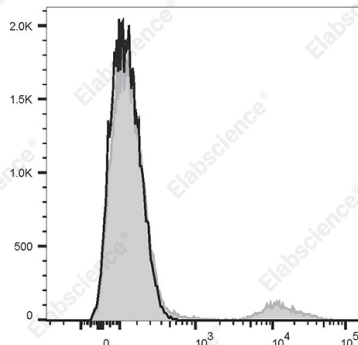
Reactivity	Human
Host	Human
Isotype	Human IgG1, κ
Clone No.	Rituximab
Isotype Control	Elab Fluor® Violet 450 Anti-Human IgG1 Isotype Control Antibody[MOPC21.1] [Product AN00840Q]
Conjugation	Elab Fluor® Violet 450
Conjugation Information	Elab Fluor® Violet 450 is designed to be excited by the violet laser (405 nm) and detected using an optical filter centered near 450 nm (e.g., a 450/45 nm bandpass filter).
Storage Buffer	Phosphate buffered solution, pH 7.2, containing 0.09% stabilizer.

Applications

Recommended usage

FCM	Each lot of this antibody is quality control tested by flow cytometric analysis. The amount of the reagent is suggested to be used 5 μL of antibody per test (million cells in 100 μL staining volume or per 100 μL of whole blood). Please check your vial before the experiment. Since applications vary, the appropriate dilutions must be determined for individual use.
------------	--

Data



Staining of normal human peripheral blood cells with Elab

Fluor® Violet 450 Anti-Human CD20 Antibody[Rituximab]

(filled gray histogram) or Elab Fluor® Violet 450 Human IgG1, κ Isotype Control (empty black histogram). Cells in the lymphocytes gate were used for analysis

Preparation & Storage

Storage	Keep as concentrated solution. This product can be stored at 2-8°C for 12 months. Please protected from prolonged exposure to light and do not freeze.
Shipping	Ice bag

Antigen Information

Alternate Names	B1;Bp35;LEU-16;MS4A1;AN007760
Uniprot ID	P11836

For Research Use Only

Toll-free: 1-888-852-8623
Web: www.elabscience.com

Tel: 1-832-243-6086
Email: techsupport@elabscience.com

Fax: 1-832-243-6017

Rev. V1.2

Gene ID

931

Background

CD20 is expressed on pre-B-cells, naive and activated B cells, memory B cells, and at lower levels on a small subset of T cells but is absent from plasmablasts and plasma cells. It is also expressed on most malignant B cells and CD20-positive T-cell lymphomas. CD20 functions in mediating calcium transport and B cell activation, differentiation, and survival.