

# Recombinant AdSS 2 Monoclonal Antibody

Catalog Number:E-AB-81526



**Note:** Centrifuge before opening to ensure complete recovery of vial contents.

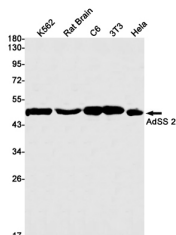
## Description

<b>Reactivity</b>	Human,Mouse,Rat
<b>Immunogen</b>	Recombinant protein of human AdSS 2
<b>Host</b>	Rabbit
<b>Isotype</b>	IgG
<b>Clone</b>	R05-8F8
<b>Purification</b>	Affinity Purified
<b>Conjugation</b>	Unconjugated
<b>Formulation</b>	50mM Tris-Glycine(pH 7.4), 0.15M NaCl, 40% Glycerol, 0.01% Sodium azide and 0.05% protective protein

## Applications Recommended Dilution

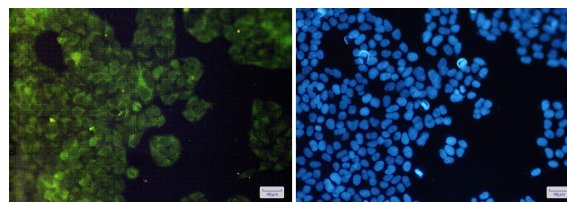
<b>WB</b>	1:500-1:1000
<b>IF</b>	1:50-1:200

## Data



Western blot detection of AdSS 2 in K562,Rat Brain,C6,3T3,HeLa cell lysates using AdSS 2 Rabbit mAb(1:1000 diluted).Predicted band size:50kDa.Observed band size:50kDa.

**Observed Mw:50kDa**  
**Calculated Mw:50kDa**



Immunofluorescence of AdSS 2(green) in HeLa cells using AdSS 2 Rabbit mAb at dilution 1:200, and DAPI(blue)

## Preparation & Storage

**Storage** Store at -20°C. Avoid freeze / thaw cycles.

## Background

This gene encodes the enzyme adenylosuccinate synthetase which catalyzes the first committed step in the conversion of inosine monophosphate to adenosine monophosphate. A pseudogene of this gene is found on chromosome 17.

## For Research Use Only

A Reliable Research Partner in Life Science and Medicine

Toll-free: 1-888-852-8623

Web: [www.elabscience.com](http://www.elabscience.com)

Tel: 1-832-243-6086

Email: [techsupport@elabscience.com](mailto:techsupport@elabscience.com)

Fax: 1-832-243-6017