

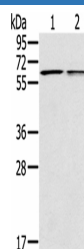
PTGER2 Polyclonal Antibody

catalog number: E-AB-16732

Note: Centrifuge before opening to ensure complete recovery of vial contents.

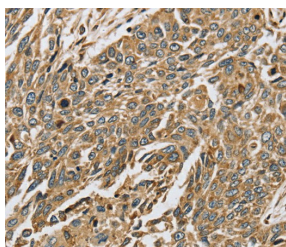
Description	
Reactivity	Human;Mouse
Immunogen	Synthetic peptide of human PTGER2
Host	Rabbit
Isotype	IgG
Purification	Affinity purification
Conjugation	Unconjugated
Buffer	Phosphate buffered solution, pH 7.4, containing 0.05% stabilizer and 50% glycerol.
Applications	Recommended Dilution
WB	1:200-1:1000
IHC	1:50-1:200

Data

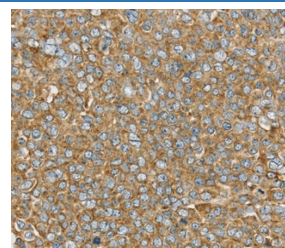


Western Blot analysis of Mouse liver and lung tissue using PTGER2 Polyclonal Antibody at dilution of 1:200

Calculated-MV:40 kDa



Immunohistochemistry of paraffin-embedded Human lung cancer using PTGER2 Polyclonal Antibody at dilution of 1:45



Immunohistochemistry of paraffin-embedded Human ovarian cancer using PTGER2 Polyclonal Antibody at dilution of 1:45

Preparation & Storage

Storage	Store at -20°C Valid for 12 months. Avoid freeze / thaw cycles.
Shipping	The product is shipped with ice pack, upon receipt, store it immediately at the temperature recommended.

Background

This gene encodes a receptor for prostaglandin E2, a metabolite of arachidonic acid which has different biologic activities in a wide range of tissues. Mutations in this gene are associated with aspirin-induced susceptibility to asthma.

For Research Use Only