

Scd14 Polyclonal Antibody(Capture/Detector)

catalog number: AN003060P

Note: Centrifuge before opening to ensure complete recovery of vial contents.

Description

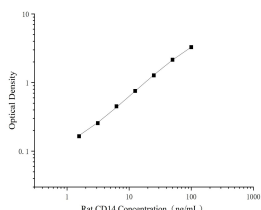
Reactivity	Human;Rat
Immunogen	Recombinant Rat sCD14 Protein expressed by Mammalian
Host	Rabbit
Isotype	Rabbit IgG
Purification	Antigen Affinity Purification
Conjugation	Unconjugated
Buffer	Phosphate buffered solution, pH 7.2, containing 0.05% proclin 300.

Applications

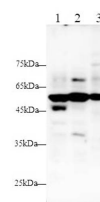
Recommended Dilution

ELISA Capture	2-8 µg/mL
ELISA Detector	0.1-0.4 µg/mL
WB	1:500-1:1000

Data



Sandwich ELISA-Recombinant Rat sCD14 Protein standard curve. Background subtracted standard curve using Anti-sCD14 antibody(AN003060P)(Capture), Anti-sCD14 antibody(AN003060P)(Detector). The reference range value is 1.56-100ng/mL for rat.



Western blot with Anti sCD14 Polyclonal antibody at dilution of 1:1000. Lane 1: HepG2 cell lysate, Lane 2: HeLa cell lysate, Lane 3: A549 cell lysate.

Observed-MW:50-55 kDa

Calculated-MW:40 kDa

Preparation & Storage

Storage	Store at 4°C valid for 12 months or -20°C valid for long term storage, avoid freeze / thaw cycles.
Shipping	The product is shipped with ice pack, upon receipt, store it immediately at the temperature recommended.

Background

CD14 is a 55 kDa cell surface glycoprotein that is preferentially expressed on monocytes/macrophages. The human CD14 cDNA encodes a 375 amino acid (aa) residue precursor protein with a 19 aa signal peptide and a C-terminal hydrophobic region characteristic for glycosylphosphatidylinositol (GPI)-anchored proteins. Human CD14 has four potential N-linked glycosylation sites and also bears O-linked carbohydrates. The amino acid sequence of human CD14 is approximately 65% identical with the mouse, rat, rabbit, and bovine proteins. CD14 is a pattern recognition receptor that binds lipopolysaccharides (LPS) and a variety of ligands derived from different microbial sources. The binding of CD14 with LPS is catalyzed by LPS-binding protein (LBP). The toll-like-receptors have also been implicated in the transduction of CD14-LPS signals. Similar to other GPI-anchored proteins, soluble CD14 can be released from the cell surface by phosphatidylinositol-specific phospholipase C. Soluble CD14 has been detected in serum and body fluids. High concentrations of soluble CD14 have been shown to inhibit LPS-mediated responses. However, soluble CD14 can also potentiate LPS response in cells that do not express cell surface CD14.