

S100A9 Polyclonal Antibody

catalog number: E-AB-40341

Note: Centrifuge before opening to ensure complete recovery of vial contents.

Description

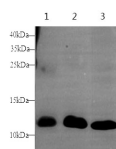
Reactivity	Mouse;Rat
Immunogen	Recombinant Mouse S100A9 protein expressed by E.coli
Host	Rabbit
Isotype	IgG
Purification	Antigen Affinity Purification
Conjugation	Unconjugated
buffer	PBS with 0.05% proclin 300, 1% protective protein and 50% glycerol,pH7.4

Applications

Recommended Dilution

WB	1:250-1:500
IHC	1:100-1:300

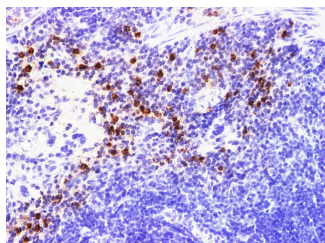
Data



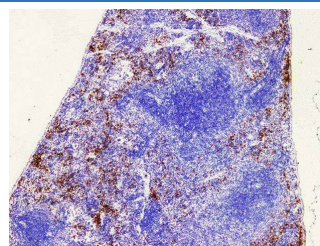
Western blot with S100A9 Polyclonal antibody at dilution of 1:1000.lane 1:Mouse lung,lane 2:Rat spleen,lane 3:Rat lung

Observed-MV:14 kDa

Calculated-MV:13 kDa



Immunohistochemistry of paraffin-embedded Mouse spleen using S100A9 Polyclonal Antibody at dilution of 1:200(400×)



Immunohistochemistry of paraffin-embedded Mouse spleen using S100A9 Polyclonal Antibody at dilution of 1:200(100×)

Preparation & Storage

Storage	Store at -20°C Valid for 12 months. Avoid freeze / thaw cycles.
Shipping	The product is shipped with ice pack,upon receipt,store it immediately at the temperature recommended.

Background

The protein encoded by this gene is a member of the S100 family of proteins containing 2 EF-hand calcium-binding motifs. S100 proteins are localized in the cytoplasm and/or nucleus of a wide range of cells, and involved in the regulation of a number of cellular processes such as cell cycle progression and differentiation. S100 genes include at least 13 members which are located as a cluster on chromosome 1q21.

For Research Use Only