

LDHB Polyclonal Antibody

catalog number: E-AB-40383

Note: Centrifuge before opening to ensure complete recovery of vial contents.

Description

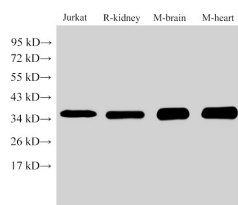
Reactivity	Human;Mouse;Rat
Immunogen	Recombinant Human L-lactate dehydrogenase B chain protein
Host	Rabbit
Isotype	IgG
Purification	Antigen Affinity Purification
Conjugation	Unconjugated
Buffer	PBS with 0.05% proclin 300, 1% protective protein and 50% glycerol,pH7.4

Applications

Recommended Dilution

WB	1:500-1:2000
-----------	--------------

Data



Western Blot analysis of 1)Jurkat, 2)Rat kidney, 3)Mouse brain, 4)Mouse heart using LDHB Polyclonal Antibody at dilution of 1:1000.

Observed-MV:36 kDa

Calculated-MV:36 kDa

Preparation & Storage

Storage	Store at -20°C Valid for 12 months. Avoid freeze / thaw cycles.
Shipping	The product is shipped with ice pack,upon receipt,store it immediately at the temperature recommended.

Background

LDHB,also named as LDH-H and NY-REN-46,belongs to the LDH/MDH superfamily. And LDH family. It is an enzyme which catalyzes the reversible conversion of lactate and pyruvate,and NAD and NADH,in the glycolytic pathway.It is glycolytic enzymes and it is positively regulated by mTOR.