

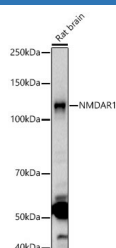
NMDAR1 Polyclonal Antibody

catalog number: E-AB-93399

Note: Centrifuge before opening to ensure complete recovery of vial contents.

Description	
Reactivity	Human;Mouse;Rat
Immunogen	A synthetic phosphorylated of human NMDAR1
Host	Rabbit
Isotype	IgG
Purification	Affinity purification
Buffer	Phosphate buffered solution, pH 7.4, containing 0.05% stabilizer and 50% glycerol.
Applications	Recommended Dilution
WB	1:500-1:2000
IHC	1:50-1:200
IF	1:50-1:200

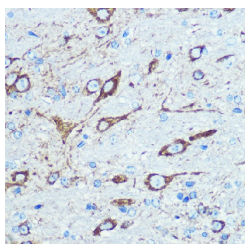
Data



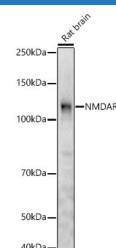
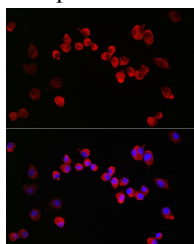
Western blot analysis of Rat brain using NMDAR1 Polyclonal Antibody at 1:2000 dilution.

Observed-MW: 120 kDa

Calculated-MW: 99-107 kDa



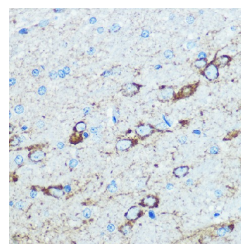
Immunohistochemistry of paraffin-embedded mouse brain using NMDAR1 Polyclonal Antibody at dilution of 100 (40x lens). Perform microwave antigen retrieval with 10 mM PBS buffer pH 7.2 before commencing with IHC staining protocol.



Western blot analysis of Mouse brain using NMDAR1 Polyclonal Antibody at 1:2000 dilution.

Observed-MW: 120 kDa

Calculated-MW: 99-107 kDa



Immunohistochemistry of paraffin-embedded rat brain using NMDAR1 Polyclonal Antibody at dilution of 100 (40x lens). Perform microwave antigen retrieval with 10 mM PBS buffer pH 7.2 before commencing with IHC staining protocol.

For Research Use Only

Immunofluorescence analysis of Neuro-2a cells using
NMDAR1 Polyclonal Antibody at dilution of 1:200 (40x
lens). Blue: DAPI for nuclear staining.

Preparation & Storage

Storage

Store at -20°C Valid for 12 months. Avoid freeze / thaw cycles.

Shipping

The product is shipped with ice pack, upon receipt, store it immediately at the temperature recommended.

Background

The protein encoded by this gene is a critical subunit of N-methyl-D-aspartate receptors, members of the glutamate receptor channel superfamily which are heteromeric protein complexes with multiple subunits arranged to form a ligand-gated ion channel. These subunits play a key role in the plasticity of synapses, which is believed to underlie memory and learning. Cell-specific factors are thought to control expression of different isoforms, possibly contributing to the functional diversity of the subunits. Alternatively spliced transcript variants have been described.

For Research Use Only