

## Recombinant Human CGB7 Protein (His Tag)

**Catalog Number: PKSH030725**

**Note:** Centrifuge before opening to ensure complete recovery of vial contents.

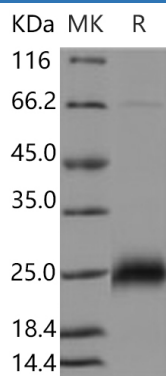
### Description

<b>Species</b>	Human
<b>Source</b>	Baculovirus-Insect Cells-derived Human CGB7 protein Met 1-Gln 165, with an C-terminal His
<b>Calculated MW</b>	17 kDa
<b>Observed MW</b>	25 kDa
<b>Accession</b>	P01233-1
<b>Bio-activity</b>	Not validated for activity

### Properties

<b>Purity</b>	> 96 % as determined by reducing SDS-PAGE.
<b>Endotoxin</b>	< 1.0 EU per µg of the protein as determined by the LAL method.
<b>Storage</b>	Generally, lyophilized proteins are stable for up to 12 months when stored at -20 to -80°C. Reconstituted protein solution can be stored at 4-8°C for 2-7 days. Aliquots of reconstituted samples are stable at < -20°C for 3 months.
<b>Shipping</b>	This product is provided as lyophilized powder which is shipped with ice packs.
<b>Formulation</b>	Lyophilized from sterile 20mM Tris, 500mM NaCl, pH 7.4, 10% glycerol Normally 5% - 8% trehalose, mannitol and 0.01% Tween 80 are added as protectants before lyophilization. Please refer to the specific buffer information in the printed manual.
<b>Reconstitution</b>	Please refer to the printed manual for detailed information.

### Data



> 96 % as determined by reducing SDS-PAGE.

### Background

CGB7 (chorionic gonadotropin, beta polypeptide 7) belongs to the glycoprotein hormones subunit beta family. Glycoprotein hormones are heterodimers consisting of a common alpha subunit and an unique beta subunit which confers biological specificity. CGB7 gene is a member of the glycoprotein hormone beta chain family and encodes the beta 7 subunit of chorionic gonadotropin (CG). CG is produced by the trophoblastic cells of the placenta and stimulates the ovaries to synthesize the steroids that are essential for the maintenance of pregnancy. The beta subunit of CG is encoded by 6 genes which are arranged in tandem and inverted pairs on chromosome 19q13.3 and contiguous with the luteinizing hormone beta subunit gene. CGB7 is used as adjunctive therapy in the treatment of obesity. CGB7 also stimulates the ovaries to synthesize the steroids that are essential for the maintenance of pregnancy.

### For Research Use Only

Toll-free: 1-888-852-8623  
Web: [www.elabscience.com](http://www.elabscience.com)

Tel: 1-832-243-6086  
Email: [techsupport@elabscience.com](mailto:techsupport@elabscience.com)

Fax: 1-832-243-6017