

ECM1 Polyclonal Antibody

catalog number: **E-AB-53374**

Note: Centrifuge before opening to ensure complete recovery of vial contents.

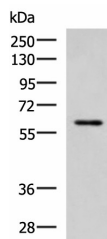
Description

Reactivity	Human
Immunogen	Synthetic peptide of human ECM1
Host	Rabbit
Isotype	IgG
Purification	Antigen affinity purification
Buffer	Phosphate buffered solution, pH 7.4, containing 0.05% stabilizer and 50% glycerol.

Applications

Applications	Recommended Dilution
WB	1:500-1:2000
IHC	1:50-1:100

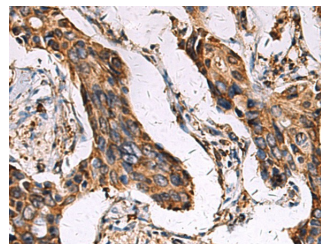
Data



Western blot analysis of MCF7 cell lysate using ECM1 Polyclonal Antibody at dilution of 1:1000

Observed-MW:Refer to figures

Calculated-MW:61 kDa



Immunohistochemistry of paraffin-embedded Human breast cancer tissue using ECM1 Polyclonal Antibody at dilution of 1:45(×200)

Preparation & Storage

Storage	Store at -20°C Valid for 12 months. Avoid freeze / thaw cycles.
Shipping	The product is shipped with ice pack,upon receipt,store it immediately at the temperature recommended.

Background

Extracellular matrix protein 1 (ECM1) is a glycoprotein involved in a number of biological processes such as bone formation, skin differentiation, cell proliferation, and promotes angiostasis. Pathologically, ECM1 contributes to the formation and metastasis of several types of cancer including breast, thyroid and hepatocellular cancers. (21128013) It inhibits MMP9 proteolytic activity.

For Research Use Only