

beta Tubulin Polyclonal Antibody

catalog number: E-AB-40518

Note: Centrifuge before opening to ensure complete recovery of vial contents.

Description

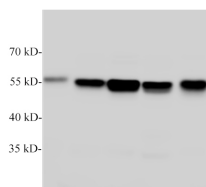
Reactivity	Human;Mouse;Rat
Immunogen	Synthetic peptide derived from human TUBB protein conjugated to keyhole limpet haemocyanin.
Host	Rabbit
Isotype	IgG
Purification	Antigen Affinity Purification
Conjugation	Unconjugated
buffer	PBS with 0.05% proclin 300, 1% protective protein and 50% glycerol,pH7.4

Applications

Recommended Dilution

WB	1:1000-2000
IF	1:2000

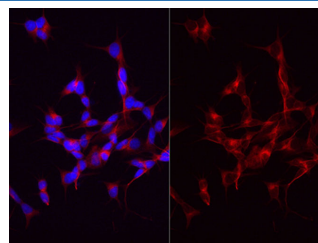
Data



Western Blotting with anti-TUBB polyclonal antibody at dilution of 1:1000. Lane 1:Hela, Lane 2: NIH/3T3, Lane 3: C6, Lane 4: PC-12, Lane 5: A431

Observed-MV:55 kDa

Calculated-MV:55 kDa



Immunofluorescent analysis of SHSY-5Y cells with anti-beta Tubulin Polyclonal Antibody at dilution of 1:2000.

Preparation & Storage

Storage	Store at -20°C Valid for 12 months. Avoid freeze / thaw cycles.
Shipping	The product is shipped with ice pack,upon receipt,store it immediately at the temperature recommended.

Background

Tubulin is a highly conserved $\alpha\beta$ dimeric protein present and is essential for all eukaryotes. $\alpha\beta$ -Tubulin dimers assemble into microtubules, dynamic polymers important in a variety of functions, most noticeably, mitosis. Tubulin assembly and disassembly

For Research Use Only