

Recombinant Methionyl Aminopeptidase 1 Monoclonal Antibody

catalog number: AN301239L

Note: Centrifuge before opening to ensure complete recovery of vial contents.

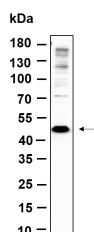
Description

Reactivity	Human;Mouse;Rat
Immunogen	Recombinant Human Methionyl Aminopeptidase 1 protein
Host	Rabbit
Isotype	IgG, κ
Clone	5B11
Purification	Protein A
Buffer	PBS, 50% glycerol, 0.05% Proclin 300, 0.05% protein protectant.

Applications Recommended Dilution

WB	1:1000-1:5000
-----------	---------------

Data



Western Blot with Recombinant Methionyl Aminopeptidase 1 Monoclonal Antibody at dilution of 1:1000 dilution. Lane A: A375 lysate.

Observed-MW:42 kDa

Calculated-MW:42 kDa

Preparation & Storage

Storage	Store at -20°C Valid for 12 months. Avoid freeze / thaw cycles.
Shipping	Ice bag

Background

Release of N-terminal amino acids, preferentially methionine, from peptides and arylamides. cofactor: Binds 1 sodium ion per subunit. The sodium ion has a structural role. cofactor: Binds 2 cobalt ions per subunit. cofactor: Binds 2 cobalt ions per subunit. The true nature of the physiological cofactor is under debate. The enzyme is also active with zinc, manganese or divalent iron ions. Removes the amino-terminal methionine from nascent proteins. Removes the amino-terminal methionine from nascent proteins. Required for normal progression through the cell cycle. similarity: Belongs to the peptidase M24A family.

For Research Use Only

Toll-free: 1-888-852-8623
Web: www.elabscience.com

Tel: 1-832-243-6086
Email: techsupport@elabscience.com

Fax: 1-832-243-6017

Rev. V1.0