

## Elab Fluor® Violet 610 Anti-Human CD62L Antibody[DREG56]

Catalog Number: E-AB-F1051T

Note: Centrifuge before opening to ensure complete recovery of vial contents.

### Description

<b>Reactivity</b>	Human
<b>Host</b>	Mouse
<b>Isotype</b>	Mouse IgG1, κ
<b>Clone No.</b>	DREG56
<b>Isotype Control</b>	Elab Fluor® Violet 610 Mouse IgG1, κ Isotype Control[MOPC-21] [Product E-AB-F09792T]
<b>Conjugation</b>	Elab Fluor® Violet 610
<b>Conjugation Information</b>	Elab Fluor® Violet 610 is designed to be excited by the violet laser (405 nm) and detected using an optical filter centered near 613 nm (e.g., a 615/20 nm bandpass filter).
<b>Storage Buffer</b>	Phosphate buffered solution, pH 7.2, containing 0.09% sodium azide and 1% BSA.

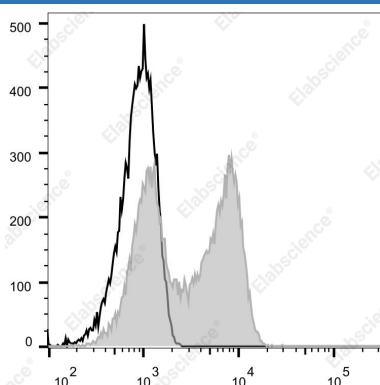
### Applications

### Recommended usage

#### FCM

Each lot of this antibody is quality control tested by flow cytometric analysis. **The amount of the reagent is suggested to be used 5 μL of antibody per test (million cells in 100 μL staining volume or per 100 μL of whole blood).** Please check your vial before the experiment. Since applications vary, the appropriate dilutions must be determined for individual use.

### Data



Staining of normal human peripheral blood cells with Elab Fluor® Violet 610 Anti-Human CD62L Antibody[DREG56](filled gray histogram) or Elab Fluor® Violet 610 Mouse IgG1, κ Isotype Control(empty black histogram). Cells in the lymphocytes gate were used for analysis.

### Preparation & Storage

<b>Storage</b>	Keep as concentrated solution. This product can be stored at 2-8°C for 12 months. Please protected from prolonged exposure to light and do not freeze.
<b>Shipping</b>	Ice bag

### Antigen Information

<b>Alternate Names</b>	CD62L;CD62 antigen-like family member L;L-selectin;LAM-1;LECAM1;Lnh;Ly-22;Ly22;Lymph node homing receptor;Sell
------------------------	--

### For Research Use Only

**Uniprot ID**

P14151

**Gene ID**

6402

**Background**

CD62L is a 74-95 kD single chain type I glycoprotein referred to as L-selectin or LECA M-1. It is expressed on most peripheral blood B cells, subsets of T and NK cells, monocytes, granulocytes, and certain hematopoietic malignant cells. CD62L binds to carbohydrates present on certain glycoforms of CD34, glycamin-1, and MAdCAM-1 and with a low affinity to anionic oligosaccharide sequences related to sialylated Lewis X (sLex, CD15s) through its C-type lectin domain. CD62L is important for the homing of naïve lymphocytes to high endothelial venules in peripheral lymph nodes and Peyer's patches. It also plays a role in leukocyte rolling on activated endothelial cells.