

AF/LE Purified Anti-Human CD62L Antibody[DREG56]

catalog number: E-AB-F10510



Note: Centrifuge before opening to ensure complete recovery of vial contents.

Description

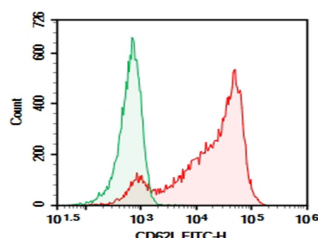
Reactivity	Human
Immunogen	Recombinant Human CD62L protein
Host	Mouse
Isotype	Mouse IgG1, κ
Clone	DREG56
Purification	>98%, Protein A/G purified
Conjugation	None (AF/LE)
buffer	Sterile PBS, pH 7.2. < 1.0 EU per mg of the antibody as determined by the LAL method

Applications

Recommended Dilution

FCM	2 $\mu\text{g}/\text{mL}$ (1×10^5 - 5×10^5 cells)
------------	--

Data



Human peripheral blood lymphocytes were stained with 0.2 μg AF/LE Purified Anti-Human CD62L Antibody[DREG56] (Right) and 0.2 μg Mouse IgG1, κ Isotype Control (Left), followed by FITC-conjugated Goat Anti-Mouse IgG Secondary Antibody.

Preparation & Storage

Storage	Store at 4°C valid for 12 months or -20°C valid for long term storage, avoid freeze / thaw cycles. This preparation contains no preservatives, thus it should be handled under aseptic conditions.
Shipping	Order now, ship in 3 days

Background

CD62L is a 74-95 kD glycoprotein also known as L-selectin, LECAM-1, Ly-22, LAM-1, and MEL-14. It is a member of the selectin family and is expressed on the majority of B and naive T cells, a subset of memory T cells, monocytes, granulocytes, most thymocytes, and a subset of NK cells. CD62L is important in lymphocyte homing to high endothelial venules (HEV) in peripheral lymph nodes and leukocyte 'rolling' on activated endothelium. CD62L also contributes to neutrophil emigration at inflammatory sites. CD62L is rapidly shed from lymphocytes and neutrophils upon cellular activation and the expression levels of CD62L (in conjunction with other markers) have been used to distinguish naive, effector, and memory T cells. CD62L has been reported to interact with CD34, GlyCAM-1, and MAdCAM-1.

For Research Use Only

A Reliable Research Partner in Life Science and Medicine
Tel: 400-999-2100

Email: techsupport@elabscience.cn

Web: www.elabscience.cn

Rev. V1.4