

Recombinant Human LYG2 Protein (His Tag)

Catalog Number: PKSH032723

Note: Centrifuge before opening to ensure complete recovery of vial contents.

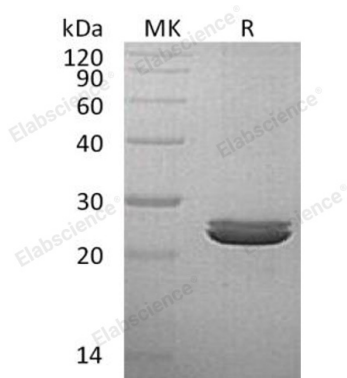
Description

Species	Human
Source	HEK293 Cells-derived Human LYG2 protein Ser20-Phe212, with an C-terminal His
Calculated MW	22.6 kDa
Observed MW	23-27 kDa
Accession	Q86SG7
Bio-activity	Not validated for activity

Properties

Purity	> 95 % as determined by reducing SDS-PAGE.
Concentration	Subject to label value.
Endotoxin	< 1.0 EU per µg of the protein as determined by the LAL method.
Storage	Store at < -20°C, stable for 6 months. Please minimize freeze-thaw cycles.
Shipping	This product is provided as liquid. It is shipped at frozen temperature with blue ice/gel packs. Upon receipt, store it immediately at < -20°C.
Formulation	Supplied as a 0.2 µm filtered solution of 20mM PB, 150mM NaCl, 10% Glycerol, pH 7.2.

Data



> 95 % as determined by reducing SDS-PAGE.

Background

Lysozyme G-Like Protein 2 (LYG2) is a secreted protein that belongs to the glycosyl hydrolase 23 family. LYG2 contains one SLT domain, one protein domain present in bacterial lytic transglycosylase (SLT) and in eukaryotic lysozymes (GEWL). SLT domain catalyzes the cleavage of the β -1,4-glycosidic bond between N-acetylmuramic acid (MurNAc) and N-acetylglucosamine (GlcNAc). LYG2 has hydrolase activity which acting on glycosyl bonds, and possess lysozyme activity.

For Research Use Only

Toll-free: 1-888-852-8623
Web: www.elabscience.com

Tel: 1-832-243-6086
Email: techsupport@elabscience.com

Fax: 1-832-243-6017