

HK2 Polyclonal Antibody

Catalog Number: E-AB-14706

3 Publications

 **DIA-AN**[®]
by Elabscience

Note: Centrifuge before opening to ensure complete recovery of vial contents.

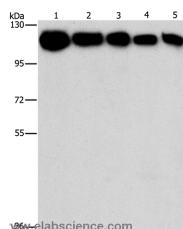
Description

Reactivity	Human, Mouse, Rat
Immunogen	Recombinant protein of human HK2
Host	Rabbit
Isotype	IgG
Purification	Affinity purification
Conjugation	Unconjugated
Formulation	PBS with 0.05% sodium azide and 50% glycerol, PH7.4

Applications Recommended Dilution

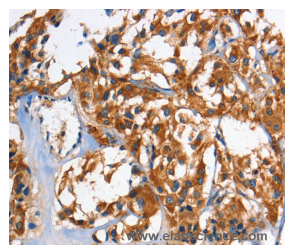
WB	1:1000-1:5000
IHC	1:100-1:300

Data

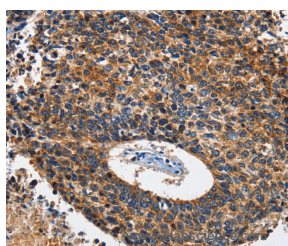


Western Blot analysis of A431, K562, 231, hela and hepG2 cell using HK2 Polyclonal Antibody at dilution of 1:1200

Calculated Mw: 102kDa



Immunohistochemistry of paraffin-embedded Human thyroid cancer using HK2 Polyclonal Antibody at dilution of 1:60



Immunohistochemistry of paraffin-embedded Human lung cancer using HK2 Polyclonal Antibody at dilution of 1:60

Preparation & Storage

Storage Store at -20°C. Avoid freeze / thaw cycles.

Background

Hexokinases phosphorylate glucose to produce glucose-6-phosphate, the first step in most glucose metabolism pathways. This gene encodes hexokinase 2, the predominant form found in skeletal muscle. It localizes to the outer membrane of mitochondria. Expression of this gene is insulin-responsive, and studies in rat suggest that it is involved in the increased

For Research Use Only

A Reliable Research Partner in Life Science and Medicine

Toll-free: 1-888-852-8623

Web: www.elabscience.com

Tel: 1-832-243-6086

Email: techsupport@elabscience.com

Fax: 1-832-243-6017

HK2 Polyclonal Antibody

Catalog Number: E-AB-14706

3 Publications



rate of glycolysis seen in rapidly growing cancer cells.

For Research Use Only

A Reliable Research Partner in Life Science and Medicine

Toll-free: 1-888-852-8623

Tel: 1-832-243-6086

Fax: 1-832-243-6017

Web: www.elabscience.com

Email: techsupport@elabscience.com