

## THOC7 Polyclonal Antibody

**catalog number: E-AB-10940**

**Note:** Centrifuge before opening to ensure complete recovery of vial contents.

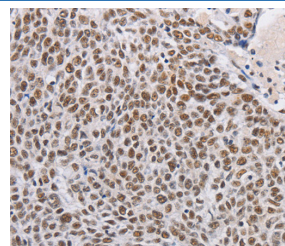
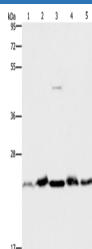
### Description

|                     |  |
|---------------------|--|
| <b>Reactivity</b>   | Human;Mouse  |
| <b>Immunogen</b>    | Recombinant protein of human THOC7   |
| <b>Host</b>         | Rabbit   |
| <b>Isotype</b>      | IgG  |
| <b>Purification</b> | Affinity purification  |
| <b>Buffer</b>       | Phosphate buffered solution, pH 7.4, containing 0.05% stabilizer and 50% glycerol. |

### Applications

| Applications | Recommended Dilution |
|--------------|----------------------|
| <b>WB</b>    | 1:500-1:2000         |
| <b>IHC</b>   | 1:25-1:100           |

### Data



Western Blot analysis of Mouse spleen and Human fetal liver tissue, HeLa cell and Mouse testis tissue, A431 cell using THOC7 Polyclonal Antibody at dilution of 1:500

Immunohistochemistry of paraffin-embedded Human lung cancer using THOC7 Polyclonal Antibody at dilution of 1:30

**Calculated-MW:24 kDa**

### Preparation & Storage

|                 |  |
|-----------------|--|
| <b>Storage</b>  | Store at -20°C Valid for 12 months. Avoid freeze / thaw cycles.  |
| <b>Shipping</b> | The product is shipped with ice pack, upon receipt, store it immediately at the temperature recommended. |

### Background

NIF3L1 BP1 (Ngg1-interacting factor 3-like 1 binding protein 1), also known as THOC7 (THO complex subunit 7 homolog), fSAP24 or hTREX30, is a 204 amino acid cytoplasmic and nuclear protein that belongs to the THOC7 family and interacts with NIF3L1. NIF3L1 BP1 is a component of the THO/TREX complex that is recruited to transcribed genes and travels along with RNA polymerase II (Pol II) during elongation, coupling Pol II with RNA splicing and export factors. The THO/TREX complex also plays a role in the export of Kaposi's sarcoma-associated herpesvirus (KSHV) intronless mRNAs and infectious virus production. The gene that encodes NIF3L1 BP1 maps to human chromosome 3p14.1.

### For Research Use Only