

Recombinant Human PHLDA2/BWR1C Protein (His Tag)

Catalog Number: PKSH032887

Note: Centrifuge before opening to ensure complete recovery of vial contents.

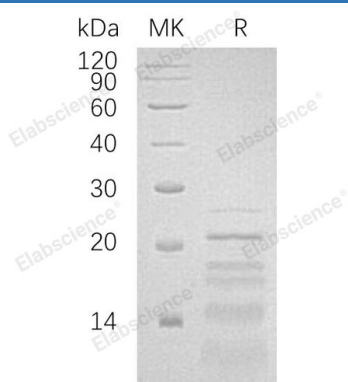
Description

Species	Human
Source	E.coli-derived Human PHLDA2;BWR1C protein Met 1-Pro152, with an C-terminal His
Calculated MW	18.1 kDa
Observed MW	14-25 kDa
Accession	Q53GA4
Bio-activity	Not validated for activity

Properties

Purity	> 90 % as determined by reducing SDS-PAGE.
Endotoxin	< 1.0 EU per µg of the protein as determined by the LAL method.
Storage	Generally, lyophilized proteins are stable for up to 12 months when stored at -20 to -80 °C. Reconstituted protein solution can be stored at 4-8°C for 2-7 days. Aliquots of reconstituted samples are stable at < -20°C for 3 months.
Shipping	This product is provided as lyophilized powder which is shipped with ice packs.
Formulation	Lyophilized from a 0.2 µm filtered solution of 20mM Tris-HCl, 100mM NaCl, 1mM DTT, pH 8.0. Normally 5% - 8% trehalose, mannitol and 0.01% Tween 80 are added as protectants before lyophilization. Please refer to the specific buffer information in the printed manual.
Reconstitution	Please refer to the printed manual for detailed information.

Data



> 90 % as determined by reducing SDS-PAGE.

Background

Pleckstrin Homology-Like Domain Family A Member 2 (PHLDA2) is a peripheral membrane protein that belongs to the PHLDA2 family. PHLDA2 is expressed in the placenta and adult prostate gland. In the placenta, it is present in all cells of the villous cytotrophoblast. PHLDA2 plays a role in regulating placenta growth. PHLDA2 may act via its PH domain that competes with other PH domain-containing proteins, thereby preventing their binding to membrane lipids.

For Research Use Only

Toll-free: 1-888-852-8623
Web: www.elabscience.com

Tel: 1-832-243-6086
Email: techsupport@elabscience.com

Fax: 1-832-243-6017

Rev. V3.6