

## PE Anti-Human CD329 Antibody[K8]

Catalog Number: AN00319D

**Note:** Centrifuge before opening to ensure complete recovery of vial contents.

### Description

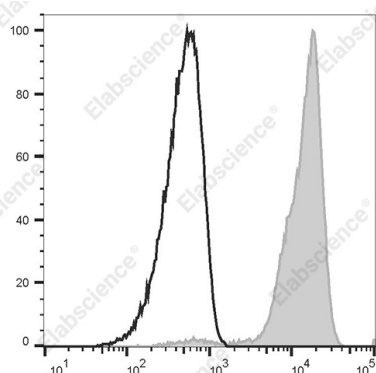
|                                |   |
|--------------------------------|---|
| <b>Reactivity</b>              | Human   |
| <b>Host</b>                    | Mouse   |
| <b>Isotype</b>                 | Mouse IgG1, κ   |
| <b>Clone No.</b>               | K8  |
| <b>Isotype Control</b>         | PE Mouse IgG1, κ Isotype Control[MOPC-21] [Product E-AB-F09792D]  |
| <b>Conjugation</b>             | PE  |
| <b>Conjugation Information</b> | PE is designed to be excited by the Blue (488 nm), Green (532 nm) and Yellow-Green (561 nm) lasers and detected using an optical filter centered near 575 nm (e.g., a 585/42 nm bandpass filter). |
| <b>Storage Buffer</b>          | Phosphate buffered solution, pH 7.2, containing 0.09% stabilizer.   |

### Applications

### Recommended usage

|            |   |
|------------|---|
| <b>FCM</b> | Each lot of this antibody is quality control tested by flow cytometric analysis. <b>The amount of the reagent is suggested to be used 5 μL of antibody per test (million cells in 100 μL staining volume or per 100 μL of whole blood).</b> Please check your vial before the experiment. Since applications vary, the appropriate dilutions must be determined for individual use. |
|------------|---|

### Data



Staining of normal human peripheral blood cells with PE Anti-Human CD329(Siglec-9) Antibody[K8] (filled gray histogram) or PE Mouse IgG1, κ Isotype Control (empty black histogram). Cells in the granulocytes gate were used for analysis.

### Preparation & Storage

|                 |   |
|-----------------|---|
| <b>Storage</b>  | Keep as concentrated solution.<br>This product can be stored at 2-8°C for 24 months. Please protected from prolonged exposure to light and do not freeze. |
| <b>Shipping</b> | Ice bag   |

### Antigen Information

|                        |   |
|------------------------|---|
| <b>Alternate Names</b> | Siglec-9;Sialic acid-binding Ig-like lectin-9 |
| <b>Uniprot ID</b>      | Q9Y336  |

### For Research Use Only

**Gene ID**

27180

**Background**

Siglecs are cell surface receptors belonging to the immunoglobulin superfamily that recognize sugar antigens. The extracellular domain of siglec-9 contains an IgV region, which binds sialic acid, followed by two IgC regions. Siglec 9 and siglec 6-8,10-12 are CD33 (siglec 3) like siglecs, which have two ITIMs in the cytoplasmic tails, suggesting their functional involvement in signal transduction. It is highly expressed on neutrophils and monocytes, and at lower levels on the subpopulations of T and B lymphocytes and NK cells. Siglec-9 plays a role in negative regulation of T cell activation, and it also affects neutrophil apoptosis.