

PLSCR3 Polyclonal Antibody

Catalog Number: E-AB-63692



Note: Centrifuge before opening to ensure complete recovery of vial contents.

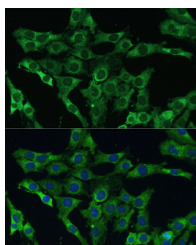
Description

Reactivity	Human, Mouse, Rat
Immunogen	Recombinant fusion protein of human PLSCR3 (NP_065093.2).
Host	Rabbit
Isotype	IgG
Purification	Affinity purification
Conjugation	Unconjugated
Formulation	PBS with 0.02% sodium azide, 50% glycerol, pH7.3.

Applications Recommended Dilution

IF	1:50-1:100
-----------	------------

Data



Immunofluorescence analysis of C6 cells using PLSCR3 Polyclonal Antibody at dilution of 1:100 (40x lens). Blue: DAPI for nuclear staining.

Preparation & Storage

Storage Store at -20°C. Avoid freeze / thaw cycles.

Background

PLSCR3 (Phospholipid Scramblase 3) is a Protein Coding gene. Diseases associated with PLSCR3 include Barth Syndrome. Gene Ontology (GO) annotations related to this gene include calcium ion binding and calcium-dependent protein binding. An important paralog of this gene is PLSCR1.

For Research Use Only

A Reliable Research Partner in Life Science and Medicine

Toll-free: 1-888-852-8623

Web: www.elabscience.com

Tel: 1-832-243-6086

Email: techsupport@elabscience.com

Fax: 1-832-243-6017