

IL37 Polyclonal Antibody

Catalog Number:E-AB-18110

Note: Centrifuge before opening to ensure complete recovery of vial contents.

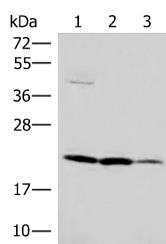
Description

Reactivity	Human
Immunogen	Synthetic peptide of human IL37
Host	Rabbit
Isotype	IgG
Purification	Antigen affinity purification
Conjugation	Unconjugated
Formulation	PBS with 0.05% NaN ₃ and 40% Glycerol,pH7.4

Applications Recommended Dilution

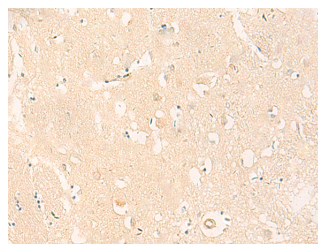
WB	1:500-1:2000
IHC	1:20-1:100
ELISA	1:5000-1:10000

Data



Western blot analysis of A549 HT29 and Raji cell lysates using IL37 Polyclonal Antibody at dilution of 1:650

Observed MW:Refer to figures
Calculated Mw:24 kDa



Immunohistochemistry of paraffin-embedded Human brain tissue using IL37 Polyclonal Antibody at dilution of 1:50(×200)

Preparation & Storage

Storage Store at -20°C. Avoid freeze / thaw cycles.

Background

The protein encoded by this gene is a member of the interleukin 1 cytokine family. This cytokine can bind to, and may be a ligand for interleukin 18 receptor (IL18R1/IL-1Rrp). This cytokine also binds to interleukin 18 binding protein (IL18BP), an inhibitory binding protein of interleukin 18 (IL18), and subsequently forms a complex with IL18 receptor beta subunit, and through which it inhibits the activity of IL18. This gene along with eight other interleukin 1 family genes form a cytokine gene cluster on chromosome 2. Five alternatively spliced transcript variants encoding distinct isoforms have been reported. IL37 (Interleukin 37) is a Protein Coding gene. Diseases associated with IL37 include Rheumatoid Arthritis. Among its related pathways are Innate Immune System and Toll-Like receptor Signaling Pathways. GO annotations related to this gene include cytokine activity and interleukin-1 receptor binding. An important paralog of this gene is IL36G.

For Research Use Only

A Reliable Research Partner in Life Science and Medicine

Toll-free: 1-888-852-8623

Web: www.elabscience.com

Tel: 1-832-243-6086

Email: techsupport@elabscience.com

Fax: 1-832-243-6017