

## Elab Fluor® 700 Anti-Human CD25 Antibody[BC96]

Catalog Number: E-AB-F1194M1

**Note:** Centrifuge before opening to ensure complete recovery of vial contents.

### Description

Reactivity	Human
Host	Mouse
Isotype	Mouse IgG1, κ
Clone No.	BC96
Isotype Control	Elab Fluor® 700 Mouse IgG1, κ Isotype Control[MOPC-21] [Product E-AB-F09792M1]
Conjugation	Elab Fluor® 700
Conjugation Information	Elab Fluor® 700 is designed to be excited by the Red laser (627-640 nm) and detected using an optical filter centered near 719 nm (e.g., a 725/40 nm bandpass filter).
Storage Buffer	Phosphate buffered solution, pH 7.2, containing 0.09% stabilizer and 1% protein protectant.

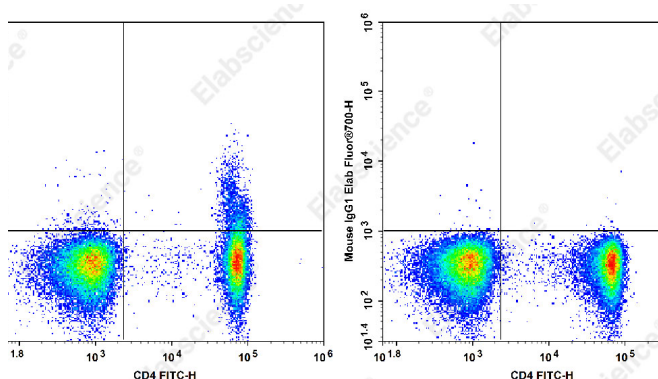
### Applications

### Recommended usage

#### FCM

Each lot of this antibody is quality control tested by flow cytometric analysis. **The amount of the reagent is suggested to be used 5 µL of antibody per test (million cells in 100 µL staining volume or per 100 µL of whole blood).** Please check your vial before the experiment. Since applications vary, the appropriate dilutions must be determined for individual use.

### Data



Staining of Human peripheral blood with FITC Anti-Human

CD4 Antibody[RPA-T4] and Elab Fluor® 700 Anti-Human CD25 Antibody[BC96](left) or Elab Fluor® 700 Mouse IgG1, κ Isotype Control(right). Cells in the lymphocytes gate were used for analysis.

### Preparation & Storage

Storage	Keep as concentrated solution. This product can be stored at 2-8°C for 12 months. Please protected from prolonged exposure to light and do not freeze.
Shipping	Ice bag

### Antigen Information

Alternate Names	IL-2 receptor subunit alpha;IL-2-RA;IL-2R subunit alpha;IL2-RA;IL2RA;Interleukin-2 receptor subunit alpha;TAC antigen;p55
-----------------	---

### For Research Use Only

Toll-free: 1-888-852-8623  
Web: [www.elabscience.com](http://www.elabscience.com)

Tel: 1-832-243-6086  
Email: [techsupport@elabscience.com](mailto:techsupport@elabscience.com)

Fax: 1-832-243-6017

Rev. V1.7

**Uniprot ID**

P01589

**Gene ID**

3559

**Background**

CD25 is a 55 kD type I transmembrane glycoprotein also known as the low affinity IL-2 receptor  $\alpha$  chain or Tac. It is expressed on progenitor lymphocytes, activated T and B cells, and activated monocytes/macrophages. CD25 is also expressed on a subset of non-stimulated CD4+ T cells termed T regulatory cells. CD25 associates with the IL-2 receptor  $\beta$  (CD122) and common  $\gamma$  chains (CD132) to form the high affinity IL-2R complex.