

## Elab Bright™ Violet 421 Anti-Mouse Ly6A/E(Sca-1) Antibody[D7]

**Catalog Number:** E-AB-F1191Q2

**Note:** Centrifuge before opening to ensure complete recovery of vial contents.

### Description

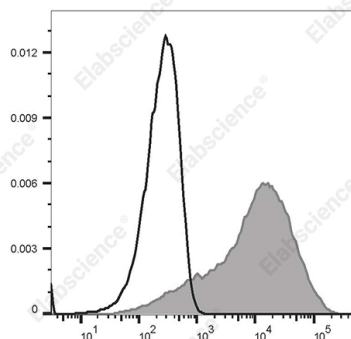
|                                |   |
|--------------------------------|---|
| <b>Reactivity</b>              | Mouse   |
| <b>Host</b>                    | Rat   |
| <b>Isotype</b>                 | Rat IgG2a, κ  |
| <b>Clone No.</b>               | D7  |
| <b>Isotype Control</b>         | Elab Bright™ Violet 421 Rat IgG2a, κ Isotype Control[R35-95] [Product AN00822Q2]  |
| <b>Conjugation</b>             | Elab Bright™ Violet 421   |
| <b>Conjugation Information</b> | Elab Bright™ Violet 421 is designed to be excited by the violet laser (405 nm) and detected using an optical filter centered near 421 nm (e.g., a 450/50 nm bandpass filter). |
| <b>Storage Buffer</b>          | Phosphate buffered solution, pH 7.2, containing 0.09% stabilizer and 1% protein protectant.   |

### Applications

### Recommended usage

|            |   |
|------------|---|
| <b>FCM</b> | Each lot of this antibody is quality control tested by flow cytometric analysis. <b>The amount of the reagent is suggested to be used 5 μL of antibody per test (million cells in 100 μL staining volume or per 100 μL of whole blood).</b> Please check your vial before the experiment. Since applications vary, the appropriate dilutions must be determined for individual use. |
|------------|---|

### Data



Staining of C57BL/6 murine splenocytes cells with Elab

Bright™ Violet 421 Anti-Mouse Ly-6A/E Antibody[D7] (filled gray histogram) or Elab Bright™ Violet 421 Rat IgG2a, κ Isotype Control (empty black histogram). Total viable cells were used for analysis.

### Preparation & Storage

|                 |   |
|-----------------|---|
| <b>Storage</b>  | Keep as concentrated solution.<br>This product can be stored at 2-8°C for 12 months. Please protected from prolonged exposure to light and do not freeze. |
| <b>Shipping</b> | Ice bag   |

### Antigen Information

|                        |                                    |
|------------------------|------------------------------------|
| <b>Alternate Names</b> | Ly6a;Ly6;Ly-6A.2/Ly-6E.1;SCA-1;TAP |
| <b>Uniprot ID</b>      | P05533                             |

### For Research Use Only

Toll-free: 1-888-852-8623  
Web: [www.elabscience.com](http://www.elabscience.com)

Tel: 1-832-243-6086  
Email: [techsupport@elabscience.com](mailto:techsupport@elabscience.com)

Fax: 1-832-243-6017

Rev. V1.6

**Gene ID**

110454

**Background**

Ly-6A/E, also known as Sca-1, is an 18 kD member of the Ly-6 multigene family. Ly6A/E is a glycosylphosphatidylinositol (GPI)-linked protein expressed on hematopoietic stem cells. In mice expressing the Ly-6.2 haplotype (e.g., AKR, C57BL, C57BR, DBA/2, SJL, SWR, and 129), Ly-6A/E is also expressed on peripheral B lymphocytes and thymic and peripheral T lymphocytes. Strains expressing the Ly-6.1 haplotype (e.g., BALB/c, CBA, C3H/He, DBA/1, and NZB) have low Ly-6A/E expression on resting peripheral lymphocytes. The expression of Ly-6A/E on lymphocytes is upregulated upon activation from both Ly6.1 and Ly6.2 haplotype mice. Ly-6A/E is thought to be involved in the regulation of both T and B cell responses.