

MAP2K1 Polyclonal Antibody

catalog number: E-AB-70165

Note: Centrifuge before opening to ensure complete recovery of vial contents.

Description

Reactivity	Human;Mouse;Rat
Immunogen	KLH conjugated Synthetic peptide corresponding to Mouse MEK1
Host	Rabbit
Isotype	IgG
Purification	Affinity purification
Buffer	Phosphate buffered solution, pH 7.4, containing 0.05% stabilizer, 1% protein protectant and 50% glycerol.

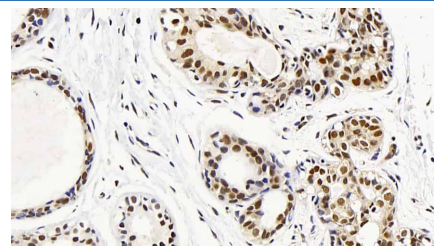
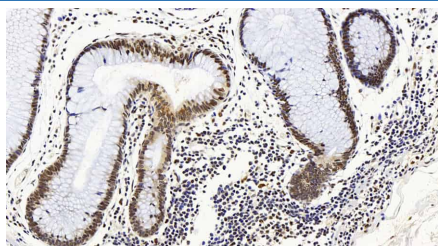
Applications

IHC

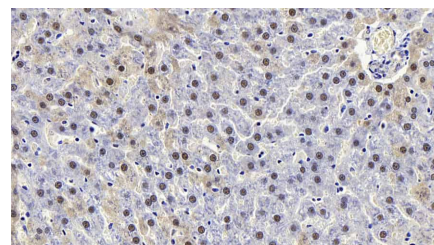
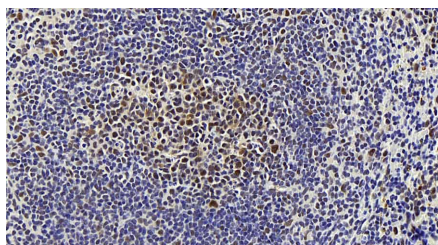
Recommended Dilution

1:100

Data



Immunohistochemistry analysis of paraffin-embedded human colon using MAP2K1 Polyclonal Antibody at dilution of 1:100. Immunohistochemistry analysis of paraffin-embedded human breast cancer using MAP2K1 Polyclonal Antibody at dilution of 1:100.



Immunohistochemistry analysis of paraffin-embedded mouse spleen using MAP2K1 Polyclonal Antibody at dilution of 1:100. Immunohistochemistry analysis of paraffin-embedded rat liver using MAP2K1 Polyclonal Antibody at dilution of 1:100.

Preparation & Storage

Storage

Store at -20°C Valid for 12 months. Avoid freeze / thaw cycles.

Shipping

The product is shipped with ice pack, upon receipt, store it immediately at the temperature recommended.

Background

For Research Use Only

The protein encoded by this gene is a member of the dual specificity protein kinase family, which acts as a mitogen-activated protein (MAP) kinase kinase. MAP kinases, also known as extracellular signal-regulated kinases (ERKs), act as an integration point for multiple biochemical signals. This protein kinase lies upstream of MAP kinases and stimulates the enzymatic activity of MAP kinases upon wide variety of extra- and intracellular signals. As an essential component of MAP kinase signal transduction pathway, this kinase is involved in many cellular processes such as proliferation, differentiation, transcription regulation and development.

For Research Use Only