

Recombinant Green monkey Calcitonin/CT Protein (His Tag)

Catalog Number: PDMC100004

Note: Centrifuge before opening to ensure complete recovery of vial contents.

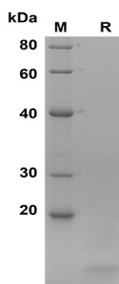
Description

| | |
|----------------------|---|
| Species | Green monkey |
| Source | HEK293 Cells-derived Green monkey Calcitonin protein Ala26-Asn140, with an C-terminal His |
| Calculated MW | 12.5 kDa |
| Observed MW | 15 kDa |
| Accession | A0A0D9QXH0 |
| Bio-activity | Not validated for activity |

Properties

| | |
|-----------------------|---|
| Purity | > 90% as determined by reducing SDS-PAGE. |
| Endotoxin | < 1.0 EU/mg of the protein as determined by the LAL method |
| Storage | Generally, lyophilized proteins are stable for up to 12 months when stored at -20 to -80°C. Reconstituted protein solution can be stored at 4-8°C for 2-7 days. Aliquots of reconstituted samples are stable at < -20°C for 3 months. |
| Shipping | This product is provided as lyophilized powder which is shipped with ice packs. |
| Formulation | Lyophilized from a 0.2 µm filtered solution in PBS with 5% Trehalose and 5% Mannitol. |
| Reconstitution | It is recommended that sterile water be added to the vial to prepare a stock solution of 0.5 mg/mL. Concentration is measured by UV-Vis. |

Data



SDS-PAGE analysis of Green monkey Calcitonin/CT proteins, 2 µg/lane of Recombinant Green monkey Calcitonin/CT proteins was resolved with SDS-PAGE under reducing conditions, showing bands at 15 kDa.

Background

Calcitonin(CT) is a protein hormones consist of 115aa with a disulfide bond. Calcitonin (CT) is most effectively produced by the parafollicular cells of the thyroid gland. It acts through the calcitonin receptor (CTR), a seven-transmembrane class II G-protein-coupled receptor linked to multiple signal transduction pathways with its main secretagogues being calcium and gastrin. Calcitonin regulates blood calcium levels and possesses certain clinically useful anti-fracture properties.

For Research Use Only

Toll-free: 1-888-852-8623
Web: www.elabscience.com

Tel: 1-832-243-6086
Email: techsupport@elabscience.com

Fax: 1-832-243-6017