

## LEO1 Polyclonal Antibody

**catalog number: E-AB-92916**

**Note:** Centrifuge before opening to ensure complete recovery of vial contents.

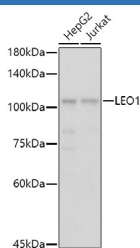
### Description

<b>Reactivity</b>	Human;Mouse;Rat
<b>Immunogen</b>	Recombinant fusion protein of human LEO1
<b>Host</b>	Rabbit
<b>Isotype</b>	IgG
<b>Purification</b>	Affinity purification
<b>Buffer</b>	Phosphate buffered solution, pH 7.4, containing 0.05% stabilizer and 50% glycerol.

### Applications

Applications	Recommended Dilution
<b>WB</b>	1:500-1:1000
<b>IHC</b>	1:50-1:200
<b>IF</b>	1:50-1:200

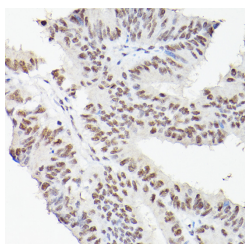
### Data



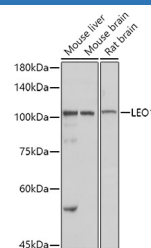
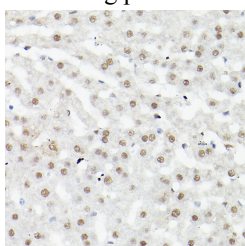
Western blot analysis of extracts of various cell lines using LEO1 Polyclonal Antibody at 1:1000 dilution.

**Observed-MW: 105 kDa**

**Calculated-MW: 68 kDa/75 kDa**



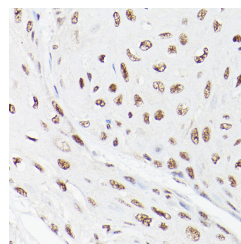
Immunohistochemistry of paraffin-embedded human colon carcinoma using LEO1 Polyclonal Antibody at dilution of 1:100 (40x lens). Perform high pressure antigen retrieval with 10 mM citrate buffer pH 6.0 before commencing with IHC staining protocol.



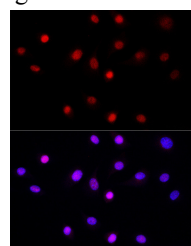
Western blot analysis of extracts of various cell lines using LEO1 Polyclonal Antibody at 1:1000 dilution.

**Observed-MW: 105 kDa**

**Calculated-MW: 68 kDa/75 kDa**

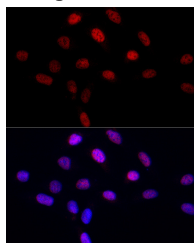


Immunohistochemistry of paraffin-embedded human esophageal cancer using LEO1 Polyclonal Antibody at dilution of 1:100 (40x lens). Perform high pressure antigen retrieval with 10 mM citrate buffer pH 6.0 before commencing with IHC staining protocol.



### For Research Use Only

Immunohistochemistry of paraffin-embedded mouse liver using LEO1 Polyclonal Antibody at dilution of 1:100 (40x lens). Perform high pressure antigen retrieval with 10 mM citrate buffer pH 6.0 before commencing with IHC staining protocol.



Immunofluorescence analysis of NIH/3T3 cells using LEO1 Polyclonal Antibody at dilution of 1:50 (40x lens). Blue: DAPI for nuclear staining.

Immunofluorescence analysis of U2OS cells using LEO1 Polyclonal Antibody at dilution of 1:50 (40x lens). Blue: DAPI for nuclear staining.

## Preparation & Storage

<b>Storage</b>	Store at -20°C Valid for 12 months. Avoid freeze / thaw cycles.
<b>Shipping</b>	The product is shipped with ice pack, upon receipt, store it immediately at the temperature recommended.

## Background

LEO1, parafibromin (CDC73; MIM 607393), CTR9 (MIM 609366), and PAF1 (MIM 610506) form the PAF protein complex that associates with the RNA polymerase II subunit POLR2A (MIM 180660) and with a histone methyltransferase complex (Rozenblatt-Rosen et al., 2005 [PubMed 15632063]). [supplied by OMIM, Mar 2008]

## For Research Use Only