

TSPY1/3 Polyclonal Antibody

catalog number: E-AB-17476

Note: Centrifuge before opening to ensure complete recovery of vial contents.

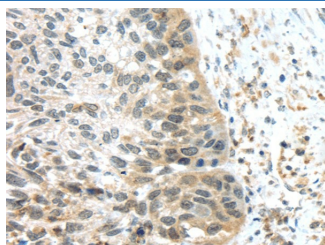
Description

| | |
|---------------------|--|
| Reactivity | Human |
| Immunogen | Synthetic peptide of human TSPY1/TSPY3 |
| Host | Rabbit |
| Isotype | IgG |
| Purification | Affinity purification |
| Buffer | Phosphate buffered solution, pH 7.4, containing 0.05% stabilizer and 50% glycerol. |

Applications Recommended Dilution

| | |
|------------|----------|
| IHC | 1:30-150 |
|------------|----------|

Data



Immunohistochemistry of paraffin-embedded Human esophagus cancer tissue using TSPY1/3 Polyclonal Antibody at dilution 1:45

Preparation & Storage

| | |
|-----------------|--|
| Storage | Store at -20°C Valid for 12 months. Avoid freeze / thaw cycles. |
| Shipping | The product is shipped with ice pack, upon receipt, store it immediately at the temperature recommended. |

Background

The protein encoded by this gene is found only in testicular tissue and may be involved in spermatogenesis. Approximately 35 copies of this gene are present in humans, but only a single, nonfunctional orthologous gene is found in mouse. Two transcript variants encoding different isoforms have been found for this gene.

For Research Use Only