

# APOL2 Polyclonal Antibody

catalog number: E-AB-19319

**Note:** Centrifuge before opening to ensure complete recovery of vial contents.

## Description

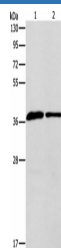
<b>Reactivity</b>	Human
<b>Immunogen</b>	Synthetic peptide of human APOL2
<b>Host</b>	Rabbit
<b>Isotype</b>	IgG
<b>Purification</b>	Antigen affinity purification
<b>Conjugation</b>	Unconjugated
<b>buffer</b>	Phosphate buffered solution, pH 7.4, containing 0.05% stabilizer and 50% glycerol.

## Applications

## Recommended Dilution

<b>WB</b>	1:500-1:2000
<b>IHC</b>	1:100-1:300

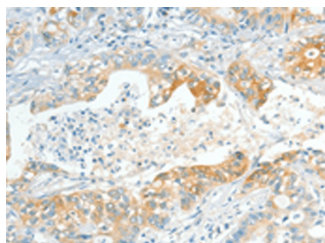
## Data



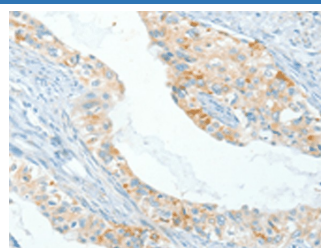
Western blot analysis of Human fetal liver tissue huvec cells using APOL2 Polyclonal Antibody at dilution of 1:725

**Observed-MV:Refer to figures**

**Calculated-MV:37 kDa**



Immunohistochemistry of paraffin-embedded Human gastric cancer tissue using APOL2 Polyclonal Antibody at dilution of 1:80( $\times 200$ )



Immunohistochemistry of paraffin-embedded Human cervical cancer tissue using APOL2 Polyclonal Antibody at dilution of 1:80( $\times 200$ )

## Preparation & Storage

<b>Storage</b>	Store at $-20^{\circ}\text{C}$ Valid for 12 months. Avoid freeze / thaw cycles.
<b>Shipping</b>	The product is shipped with ice pack,upon receipt,store it immediately at the temperature recommended.

## Background

This gene is a member of the apolipoprotein L gene family. The encoded protein is found in the cytoplasm, where it may affect the movement of lipids or allow the binding of lipids to organelles. Two transcript variants encoding the same protein have been found for this gene.

## For Research Use Only