

# Recombinant Human NECTIN 2 protein (His Tag)

Catalog Number: PDMH100151



**Note:** Centrifuge before opening to ensure complete recovery of vial contents.

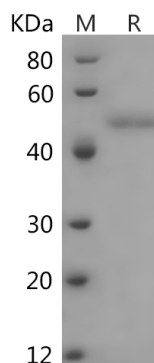
## Description

<b>Species</b>	Human
<b>Mol_Mass</b>	39.5 kDa
<b>Accession</b>	Q92692
<b>Bio-activity</b>	Not validated for activity

## Properties

<b>Purity</b>	> 95% as determined by reducing SDS-PAGE.
<b>Endotoxin</b>	< 1.0 EU/mg of the protein as determined by the LAL method
<b>Storage</b>	Generally, lyophilized proteins are stable for up to 12 months when stored at -20 to -80 °C. Reconstituted protein solution can be stored at 4-8°C for 2-7 days. Aliquots of reconstituted samples are stable at < -20°C for 3 months.
<b>Shipping</b>	This product is provided as lyophilized powder which is shipped with ice packs.
<b>Formulation</b>	Lyophilized from a 0.2 µm filtered solution in PBS with 5% Trehalose and 5% Mannitol.
<b>Reconstitution</b>	It is recommended that sterile water be added to the vial to prepare a stock solution of 0.5 mg/mL. Concentration is measured by UV-Vis.

## Data



> 95 % as determined by reducing SDS-PAGE.

## Background

CD112 is a type I transmembrane glycoprotein belonging to the Immunoglobulin superfamily. It comprises one Ig-like V-type domain and two Ig-like C2-type domains in the extracellular region. The V domain is believed to mediate nectin binding to its ligands. Nectin2 is known to bind the pseudorabies virus, and herpes simplex virus2 (HSV2), involving in cell to cell spreading of these viruses. It does not bind poliovirus. As a homophilic adhesion molecule, CD112 is found concentrated in adherens junctions, and exists on neurons, endothelial cells, epithelial cells and fibroblasts. CD112 has been identified as the ligand for DNAM-1 (CD226), and the interaction of CD226/CD112 mediates cytotoxicity and cytokine secretion by T and NK cells. The costimulatory responses may be a critical component in allergic reactions and may therefore become targets for anti-allergic therapy.

## For Research Use Only

A Reliable Research Partner in Life Science and Medicine  
Tel:400-999-2100

Email: [techsupport@elabscience.cn](mailto:techsupport@elabscience.cn)

Web: [www.elabscience.cn](http://www.elabscience.cn)

Rev. V3.8