

Elab Bright™ Violet 510 Anti-Mouse CD4 Antibody[GK1.5]

Catalog Number: E-AB-F1097R1

Note: Centrifuge before opening to ensure complete recovery of vial contents.

Description

Reactivity	Mouse
Host	Rat
Isotype	Rat IgG2b, κ
Clone No.	GK1.5
Isotype Control	Elab Bright™ Violet 510 Rat IgG2b, κ Isotype Control[R35-38] [Product AN00821R1]
Conjugation	Elab Bright™ Violet 510
Conjugation Information	Elab Bright™ Violet 510 is designed to be excited by the violet laser (405 nm) and detected using an optical filter centered near 510 nm (e.g., a 525/50 nm bandpass filter).
Storage Buffer	Phosphate buffered solution, pH 7.2, containing 0.09% sodium azide.

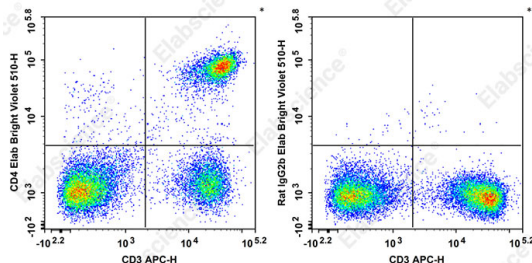
Applications

Recommended usage

FCM

Each lot of this antibody is quality control tested by flow cytometric analysis. **The amount of the reagent is suggested to be used 5 μL of antibody per test (million cells in 100 μL staining volume or per 100 μL of whole blood).** Please check your vial before the experiment. Since applications vary, the appropriate dilutions must be determined for individual use.

Data



Staining of C57BL/6 murine splenocytes cells with Elab

Bright™ Violet 510 Ms CD4 GK1.5 50ug (left) or Elab Bright

™ Violet 510 Rat IgG2b, κ Isotype Control (right). Total viable cells were used for analysis.

Preparation & Storage

Storage	Keep as concentrated solution. This product can be stored at 2-8°C for 12 months. Please protected from prolonged exposure to light and do not freeze.
Shipping	Ice bag

Antigen Information

Alternate Names	L3T4;T-cell surface antigen T4/Leu-3;T-cell surface glycoprotein CD4;T4
Uniprot ID	P06332
Gene ID	12504

For Research Use Only

Background

CD4 is a 55 kD protein also known as L3T4 or T4. It is a member of the Ig superfamily, primarily expressed on most thymocytes, a subset of T cells, and weakly on macrophages and dendritic cells. It acts as a coreceptor with the TCR during T cell activation and thymic differentiation by binding MHC class II and associating with the protein tyrosin kinase, lck.