

## Recombinant Human CLM-9/TREM4 Protein

**Catalog Number:** PKSH030648

**Note:** Centrifuge before opening to ensure complete recovery of vial contents.

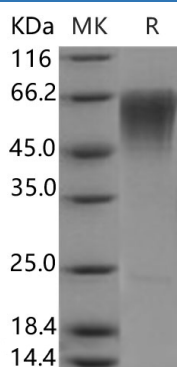
### Description

<b>Species</b>	Human
<b>Source</b>	HEK293 Cells-derived Human CLM-9/TREM4 protein Met 1-Arg247
<b>Calculated MW</b>	25.5 kDa
<b>Observed MW</b>	61-66 kDa
<b>Accession</b>	AAH25395.1
<b>Bio-activity</b>	Not validated for activity

### Properties

<b>Purity</b>	> 95 % as determined by reducing SDS-PAGE.
<b>Endotoxin</b>	< 1.0 EU per µg of the protein as determined by the LAL method.
<b>Storage</b>	Generally, lyophilized proteins are stable for up to 12 months when stored at -20 to -80°C. Reconstituted protein solution can be stored at 4-8°C for 2-7 days. Aliquots of reconstituted samples are stable at < -20°C for 3 months.
<b>Shipping</b>	This product is provided as lyophilized powder which is shipped with ice packs.
<b>Formulation</b>	Lyophilized from sterile PBS, pH 7.4 Normally 5% - 8% trehalose, mannitol and 0.01% Tween 80 are added as protectants before lyophilization. Please refer to the specific buffer information in the printed manual.
<b>Reconstitution</b>	Please refer to the printed manual for detailed information.

### Data



> 95 % as determined by reducing SDS-PAGE.

### Background

CLM-9, also known as TREM4, is a receptor which belongs to the TREM family. The TREM family of receptors regulates the activity of various cell types of the immune system including neutrophils, monocyte/macrophages, microglia, and dendritic cells. CLM-9 may mediate L-selectin-dependent lymphocyte rollings. It binds SELL in a calcium dependent manner. CLM-9 also binds lymphocyte which suggests that it functions in lymphocyte adhesion. The major CLM-9 transcript is expressed highly in human heart, skeletal muscle, and placenta. The mouse protein has been shown to be expressed in capillary endothelial cells. Human CLM-9 mediates the uptake of human IgA2 and mouse IgM.

### For Research Use Only

Toll-free: 1-888-852-8623  
Web: [www.elabscience.com](http://www.elabscience.com)

Tel: 1-832-243-6086  
Email: [techsupport@elabscience.com](mailto:techsupport@elabscience.com)

Fax: 1-832-243-6017