

## Crystallin-alpha C Monoclonal Antibody

catalog number: E-AB-22177

**Note:** Centrifuge before opening to ensure complete recovery of vial contents.

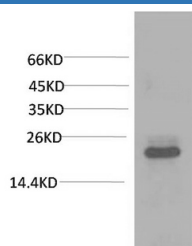
### Description

<b>Reactivity</b>	Human;Mouse;Rat
<b>Immunogen</b>	Recombinant Protein
<b>Host</b>	Mouse
<b>Isotype</b>	IgG
<b>Clone</b>	2C3
<b>Purification</b>	Protein A purification
<b>Buffer</b>	Phosphate buffered solution, pH 7.4, containing 0.05% stabilizer, 0.5% protein protectant and 50% glycerol.

### Applications Recommended Dilution

<b>WB</b>	1:1000-2000
-----------	-------------

### Data



Western Blot analysis of 293T cells using Crystallin-alpha C Monoclonal Antibody at dilution of 1:2000.

**Observed-MW:22 kDa**

### Preparation & Storage

<b>Storage</b>	Store at -20°C Valid for 12 months. Avoid freeze / thaw cycles.
<b>Shipping</b>	The product is shipped with ice pack, upon receipt, store it immediately at the temperature recommended.

### Background

The protein encoded by this gene belongs to the superfamily of small heat-shock proteins containing a conservative alpha-crystallin domain at the C-terminal part of the molecule. The expression of this gene is induced by estrogen in estrogen receptor-positive breast cancer cells, and this protein also functions as a chaperone in association with Bag3, a stimulator of macroautophagy. Thus, this gene appears to be involved in regulation of cell proliferation, apoptosis, and carcinogenesis, and mutations in this gene have been associated with different neuromuscular diseases, including Charcot-Marie-Tooth disease.

### For Research Use Only