

## Recombinant Integrin alpha 5 Monoclonal Antibody

catalog number: **E-AB-81573**

**Note:** Centrifuge before opening to ensure complete recovery of vial contents.

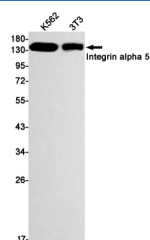
### Description

<b>Reactivity</b>	Human;Mouse
<b>Immunogen</b>	A synthetic peptide of human Integrin alpha 5
<b>Host</b>	Rabbit
<b>Isotype</b>	IgG
<b>Clone</b>	R02-3G4
<b>Purification</b>	Affinity Purified
<b>Buffer</b>	50mM Tris-Glycine(pH 7.4), 0.15M NaCl, 40% Glycerol, 0.05% stabilizer and 0.05% protective protein.

### Applications

Applications	Recommended Dilution
<b>WB</b>	1:1000-1:5000
<b>IHC</b>	1:50-1:100

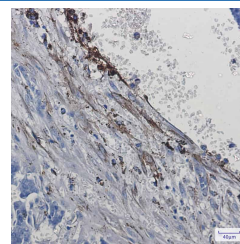
### Data



Western blot detection of Integrin alpha 5 in K562,3T3 cell lysates using Integrin alpha 5 Rabbit mAb(1:1000 diluted).Predicted band size:115kDa.Observed band size:150kDa.

**Observed-MW:150 kDa**

**Calculated-MW:115 kDa**



Immunohistochemistry of Integrin alpha 5 in paraffin-embedded Human breast cancer tissue using Integrin alpha 5 Rabbit mAb at dilution 1:50

### Preparation & Storage

<b>Storage</b>	Store at -20°C Valid for 12 months. Avoid freeze / thaw cycles.
<b>Shipping</b>	The product is shipped with ice pack,upon receipt,store it immediately at the temperature recommended.

### Background

The product of this gene belongs to the integrin alpha chain family. Integrins are heterodimeric integral membrane proteins composed of an alpha chain and a beta chain. This gene encodes the integrin alpha 5 chain. Alpha chain 5 undergoes post-translational cleavage in the extracellular domain to yield disulfide-linked light and heavy chains that join with beta 1 to form a fibronectin receptor. In addition to adhesion, integrins are known to participate in cell-surface mediated signalling. Integrin alpha 5 and integrin alpha V chains are produced by distinct genes.

### For Research Use Only