

## ATP5O Polyclonal Antibody

catalog number: E-AB-53090

**Note:** Centrifuge before opening to ensure complete recovery of vial contents.

### Description

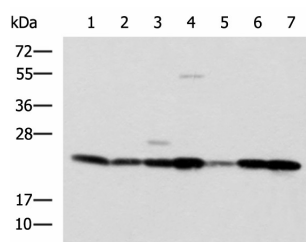
<b>Reactivity</b>	Human;Mouse
<b>Immunogen</b>	Fusion protein of human ATP5PO
<b>Host</b>	Rabbit
<b>Isotype</b>	IgG
<b>Purification</b>	Antigen affinity purification
<b>Conjugation</b>	Unconjugated
<b>Buffer</b>	Phosphate buffered solution, pH 7.4, containing 0.05% stabilizer and 50% glycerol.

### Applications

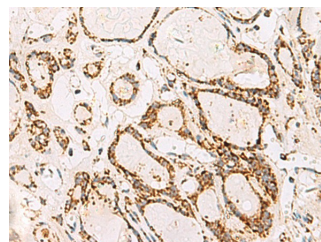
### Recommended Dilution

<b>WB</b>	1:1000-1:5000
<b>IHC</b>	1:100-1:300

### Data



Western blot analysis of SKOV3 Hela cell Mouse liver tissue Mouse heart tissue Human placenta tissue HepG2 cell Human heart tissue lysates using ATP5O Polyclonal Antibody at dilution of 1:1250



Immunohistochemistry of paraffin-embedded Human thyroid cancer tissue using ATP5O Polyclonal Antibody at dilution of 1:90(×200)

**Observed-MW:Refer to figures**

**Calculated-MW:23 kDa**

### Preparation & Storage

<b>Storage</b>	Store at -20°C Valid for 12 months. Avoid freeze / thaw cycles.
<b>Shipping</b>	The product is shipped with ice pack,upon receipt,store it immediately at the temperature recommended.

### Background

The protein encoded by this gene is a component of the F-type ATPase found in the mitochondrial matrix. F-type ATPases are composed of a catalytic core and a membrane proton channel. The encoded protein appears to be part of the connector linking these two components and may be involved in transmission of conformational changes or proton conductance.