

HOXC13 Polyclonal Antibody

catalog number: E-AB-19998

Note: Centrifuge before opening to ensure complete recovery of vial contents.

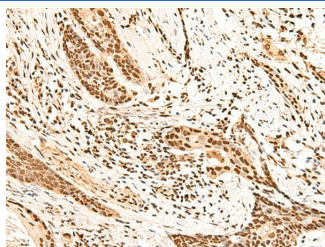
Description

| | |
|---------------------|--|
| Reactivity | Human;Mouse |
| Immunogen | Synthetic peptide of human HOXC13 |
| Host | Rabbit |
| Isotype | IgG |
| Purification | Antigen affinity purification |
| Buffer | Phosphate buffered solution, pH 7.4, containing 0.05% stabilizer and 50% glycerol. |

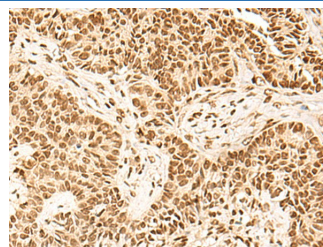
Applications Recommended Dilution

| | |
|------------|------------|
| IHC | 1:50-1:300 |
|------------|------------|

Data



Immunohistochemistry of paraffin-embedded Human esophagus cancer tissue using HOXC13 Polyclonal Antibody at dilution of 1:60(×200)



Immunohistochemistry of paraffin-embedded Human ovarian cancer tissue using HOXC13 Polyclonal Antibody at dilution of 1:60(×200)

Preparation & Storage

| | |
|-----------------|--|
| Storage | Store at -20°C Valid for 12 months. Avoid freeze / thaw cycles. |
| Shipping | The product is shipped with ice pack, upon receipt, store it immediately at the temperature recommended. |

Background

This gene belongs to the homeobox family of genes. The homeobox genes encode a highly conserved family of transcription factors that play an important role in morphogenesis in all multicellular organisms. Mammals possess four similar homeobox gene clusters, HOXA, HOXB, HOXC and HOXD, which are located on different chromosomes and consist of 9 to 11 genes arranged in tandem. This gene is one of several homeobox HOXC genes located in a cluster on chromosome 12. The product of this gene may play a role in the development of hair, nail, and filiform papilla.

For Research Use Only