

## PE/Cyanine5.5 Anti-Mouse CD62L Antibody[MEL-14]

**Catalog Number:** E-AB-F1011UI

**Note:** Centrifuge before opening to ensure complete recovery of vial contents.

### Description

<b>Reactivity</b>	Mouse
<b>Host</b>	Rat
<b>Isotype</b>	Rat IgG2a, $\kappa$
<b>Clone No.</b>	MEL-14
<b>Isotype Control</b>	PE/Cyanine5.5 Rat IgG2a, $\kappa$ Isotype Control[2A3] [Product E-AB-F09833I]
<b>Conjugation</b>	PE/Cyanine 5.5
<b>Conjugation Information</b>	PE/Cyanine5.5 is designed to be excited by the Blue (488 nm), Green (532 nm) and yellow-green (561 nm) lasers and detected using an optical filter centered near 690 nm (e.g., a 690/50 nm bandpass filter).
<b>Storage Buffer</b>	Phosphate buffered solution, pH 7.2, containing 0.09% stabilizer and 1% protein protectant.

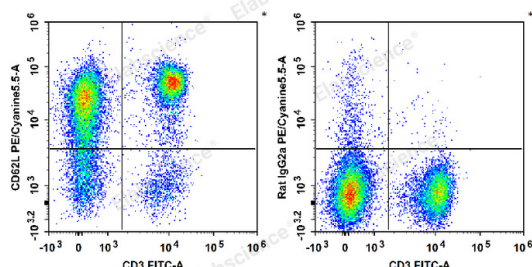
### Applications

### Recommended usage

#### FCM

Each lot of this antibody is quality control tested by flow cytometric analysis. Please check your vial before the experiment. Since applications vary, the appropriate dilutions must be determined for individual use. We suggest each investigator should titrate the reagent to obtain optimal results [The recommended concentration is 0.1-1  $\mu\text{g}/10^6$  cells in 100  $\mu\text{L}$  volume].

### Data



C57BL/6 murine splenocytes are stained with FITC Anti-Mouse CD3 Antibody and PE/Cyanine5.5 Anti-Mouse CD62L Antibody (Left). Splenocytes are stained with FITC Anti-Mouse CD3 Antibody and PE/Cyanine5.5 Rat IgG2a,  $\kappa$  Isotype Control (Right).

### Preparation & Storage

<b>Storage</b>	Keep as concentrated solution. This product can be stored at 2-8°C for 12 months. Please protected from prolonged exposure to light and do not freeze.
<b>Shipping</b>	Ice bag

### Antigen Information

<b>Alternate Names</b>	CD62L;CD62 antigen-like family member L;L-selectin;LAM-1;LECAM1;Lnhr;Ly-22;Ly22;Lymph node homing receptor;Sell
------------------------	---

### For Research Use Only

**Uniprot ID**

P18337

**Gene ID**

20343

**Background**

CD62L is a 74-95 kD glycoprotein also known as L-selectin, LECAM-1, Ly-22, LAM-1, and MEL-14. It is a member of the selectin family and is expressed on the majority of B and naïve T cells, a subset of memory T cells, monocytes, granulocytes, most thymocytes, and a subset of NK cells. CD62L is important in lymphocyte homing to high endothelial venules (HEV) in peripheral lymph nodes and leukocyte 'rolling' on activated endothelium. CD62L also contributes to neutrophil emigration at inflammatory sites. CD62L is rapidly shed from lymphocytes and neutrophils upon cellular activation and the expression levels of CD62L (in conjunction with other markers) have been used to distinguish naïve, effector, and memory T cells. CD62L has been reported to interact with CD34, GlyCAM-1, and MAdCAM-1.

---

**For Research Use Only**