

# Recombinant Human MDH1 Protein (His Tag)

Catalog Number:PKSH032730



**Note:** Centrifuge before opening to ensure complete recovery of vial contents.

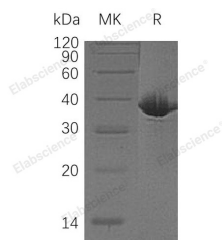
## Description

<b>Synonyms</b>	Malate Dehydrogenase Cytoplasmic;Cytosolic Malate Dehydrogenase;Diiodophenylpyruvate Reductase;MDH1;MDHA
<b>Species</b>	Human
<b>Expression Host</b>	E.coli
<b>Sequence</b>	Ser2-Ala334
<b>Accession</b>	P40925
<b>Calculated Molecular Weight</b>	37.5 kDa
<b>Observed molecular weight</b>	36 kDa
<b>Tag</b>	C-His

## Properties

<b>Purity</b>	> 95 % as determined by reducing SDS-PAGE.
<b>Endotoxin</b>	< 1.0 EU per µg of the protein as determined by the LAL method.
<b>Storage</b>	Store at < -20°C, stable for 6 months. Please minimize freeze-thaw cycles.
<b>Shipping</b>	This product is provided as liquid. It is shipped at frozen temperature with blue ice/gel packs. Upon receipt, store it immediately at < - 20°C.
<b>Formulation</b>	Supplied as a 0.2 µm filtered solution of 20mM Tris-HCl, 150mM NaCl, pH 8.0.
<b>Reconstitution</b>	Not Applicable

## Data



> 95 % as determined by reducing SDS-PAGE.

## Background

Malate Dehydrogenase, Cytoplasmic (MDH1) is an enzyme which belongs to the MDH Type 2 sub-family of LDH/MDH superfamily. MDH1 is involved in the Citric Acid Cycle that catalyzes the conversion of Malate into Oxaloacetate (using NAD<sup>+</sup>) and vice versa. MDH1 should not be confused with Malic Enzyme, which catalyzes the conversion of Malate to Pyruvate, producing NADPH. MDH1 also participates in Gluconeogenesis, the synthesis of Glucose from smaller molecules. Pyruvate in the mitochondria is acted upon by Pyruvate Carboxylase to form Pxoaloacetate, a Citric Acid Cycle intermediate. In order to transport the Oxaloacetate out of the Mitochondria, Malate Dehydrogenase reduces it to Malate, and it then traverses the inner Mitochondrial membrane. Once in the cytosol, the Malate is oxidized back to Oxaloacetate by MDH1. Finally, Phosphoenol-Pyruvate Carboxy Kinase (PEPCK) converts Oxaloacetate to Phosphoenol Pyruvate.

## For Research Use Only

A Reliable Research Partner in Life Science and Medicine

Toll-free: 1-888-852-8623

Web: [www.elabscience.com](http://www.elabscience.com)

Tel: 1-832-243-6086

Email: [techsupport@elabscience.com](mailto:techsupport@elabscience.com)

Fax: 1-832-243-6017