

## Recombinant Human Dipeptidase 1/DPEP1 Protein (His Tag)

**Catalog Number:** PKSH032356

**Note:** Centrifuge before opening to ensure complete recovery of vial contents.

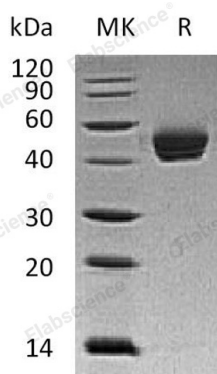
### Description

<b>Species</b>	Human
<b>Source</b>	HEK293 Cells-derived Human Dipeptidase 1;DPEP1 protein Asp17-Ser385, with an C-terminal His
<b>Calculated MW</b>	42.1 kDa
<b>Observed MW</b>	41 kDa
<b>Accession</b>	P16444
<b>Bio-activity</b>	Not validated for activity

### Properties

<b>Purity</b>	> 95 % as determined by reducing SDS-PAGE.
<b>Concentration</b>	Subject to label value.
<b>Endotoxin</b>	< 1.0 EU per µg of the protein as determined by the LAL method.
<b>Storage</b>	Store at < -20°C, stable for 6 months. Please minimize freeze-thaw cycles.
<b>Shipping</b>	This product is provided as liquid. It is shipped at frozen temperature with blue ice/ gel packs. Upon receipt, store it immediately at < - 20°C.
<b>Formulation</b>	Supplied as a 0.2 µm filtered solution of PBS, 10% Glycerol, pH 7.4.

### Data



> 95 % as determined by reducing SDS-PAGE.

### Background

Dipeptidase 1 (DPEP1) is a kidney membrane enzyme that belongs to the peptidase M19 family. DPEP1 is a homodimer and is inhibited by L-penicillamine. DPEP1 hydrolyzes a variety of dipeptides and is implicated in renal metabolism of glutathione and its conjugates. DPEP1 is responsible for hydrolysis of the beta-lactam ring of antibiotics; such as penem and carbapenem. DPEP1 may play an important role in the regulation of leukotriene activity. DPEP1 expression in cancer is significantly higher than that in normal tissue. However; DPEP1 expression decreased with pathological differentiation; lymph-node and distant metastasis.

### For Research Use Only

Toll-free: 1-888-852-8623  
Web: [www.elabscience.com](http://www.elabscience.com)

Tel: 1-832-243-6086  
Email: [techsupport@elabscience.com](mailto:techsupport@elabscience.com)

Fax: 1-832-243-6017