

Recombinant Human Arylsulfatase A/ARSA Protein (His Tag)

Catalog Number: PKSH032093

Note: Centrifuge before opening to ensure complete recovery of vial contents.

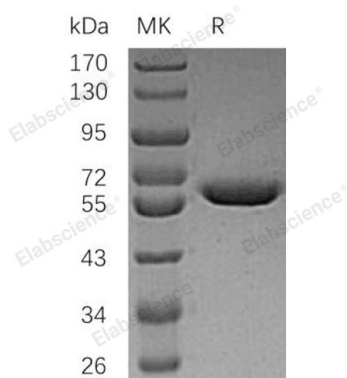
Description

Species	Human
Source	HEK293 Cells-derived Human Arylsulfatase A;ARSA protein Arg19-Ala507, with an C-terminal His
Calculated MW	52.9 kDa
Observed MW	50-65 kDa
Accession	AAH14210.2
Bio-activity	Not validated for activity

Properties

Purity	> 95 % as determined by reducing SDS-PAGE.
Concentration	Subject to label value.
Endotoxin	< 1.0 EU per µg of the protein as determined by the LAL method.
Storage	Store at < -20°C, stable for 6 months. Please minimize freeze-thaw cycles.
Shipping	This product is provided as liquid. It is shipped at frozen temperature with blue ice/gel packs. Upon receipt, store it immediately at < - 20°C.
Formulation	Supplied as a 0.2 µm filtered solution of 20mM Tris-HCl, 300mM NaCl, pH 8.0.

Data



> 95 % as determined by reducing SDS-PAGE.

Background

Arylsulfatase A (ARSA) is a lysosomal enzyme that breaks down Cerebroside 3-Sulfate, a major constituent of the myelin sheet, into Cerebroside and Sulfate. The ARSA deficiency results in Metachromatic Leukodystrophy (MLD), a lysosomal storage disease in the central and peripheral nervous systems with severe and progressive neurological symptoms. Recombinant Human ARSA corresponds to the ARSA mature peptide and has sulfatase activity.

For Research Use Only

Toll-free: 1-888-852-8623
Web: www.elabscience.com

Tel: 1-832-243-6086
Email: techsupport@elabscience.com

Fax: 1-832-243-6017