

Recombinant Mouse CCDC47 Protein (His Tag)

Catalog Number: PKSM040285

Note: Centrifuge before opening to ensure complete recovery of vial contents.

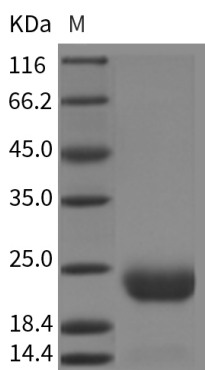
Description

Species	Mouse
Source	HEK293 Cells-derived Mouse CCDC47 protein Met1-Ser135, with an C-terminal His
Calculated MW	14.7 kDa
Accession	NP_080285.2
Bio-activity	Not validated for activity

Properties

Purity	> 95 % as determined by reducing SDS-PAGE.
Endotoxin	< 1.0 EU per µg of the protein as determined by the LAL method.
Storage	Generally, lyophilized proteins are stable for up to 12 months when stored at -20 to -80 °C. Reconstituted protein solution can be stored at 4-8°C for 2-7 days. Aliquots of reconstituted samples are stable at < -20°C for 3 months.
Shipping	This product is provided as lyophilized powder which is shipped with ice packs.
Formulation	Lyophilized from sterile PBS, pH 7.4 Normally 5% - 8% trehalose, mannitol and 0.01% Tween 80 are added as protectants before lyophilization. Please refer to the specific buffer information in the printed manual.
Reconstitution	Please refer to the printed manual for detailed information.

Data



> 95 % as determined by reducing SDS-PAGE.

Background

CCDC47 gene is expressed at high level. The gene contains 16 distinct gt-ag introns. Transcription produces 9 different mRNAs, 6 alternatively spliced variants and 3 unspliced forms. There are 3 probable alternative promoters, 3 non overlapping alternative last exons and 8 validated alternative polyadenylation sites. The mRNAs appear to differ by truncation of the 5' end, truncation of the 3' end, presence or absence of a cassette exon, overlapping exons with different boundaries. Functionally, CCDC47 gene has been proposed to participate in processes such as calcium ion homeostasis, embryo development, ER overload response and post-embryonic development. CCDC47 are expected to have molecular function (calcium ion binding) and to localize in various compartments (membrane, endoplasmic reticulum, integral to membrane, microsome).

For Research Use Only

Toll-free: 1-888-852-8623
Web: www.elabscience.com

Tel: 1-832-243-6086
Email: techsupport@elabscience.com

Fax: 1-832-243-6017