

PE/Cyanine7 Anti-Human CD11a Antibody[HI111]

Catalog Number: E-AB-F1316H

Note: Centrifuge before opening to ensure complete recovery of vial contents.

Description

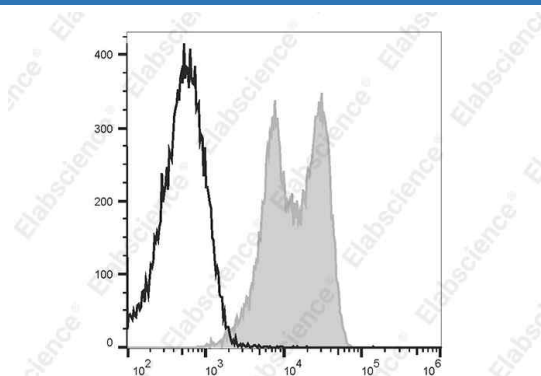
| | |
|--------------------------------|--|
| Reactivity | Human |
| Host | Mouse |
| Isotype | Mouse IgG1, κ |
| Clone No. | HI111 |
| Isotype Control | PE/Cyanine7 Mouse IgG1, κ Isotype Control[MOPC-21] [Product E-AB-F09792H] |
| Conjugation | PE/Cyanine 7 |
| Conjugation Information | PE/Cyanine7 is designed to be excited by the Blue (488 nm), Green (532 nm) and yellow-green (561 nm) lasers and detected using an optical filter centered near 775 nm (e.g., a 780/60 nm bandpass filter). |
| Storage Buffer | Phosphate buffered solution, pH 7.2, containing 0.09% stabilizer and 1% protein protectant. |

Applications

Recommended usage

| | |
|------------|--|
| FCM | Each lot of this antibody is quality control tested by flow cytometric analysis. The amount of the reagent is suggested to be used 5 μL of antibody per test (million cells in 100 μL staining volume or per 100 μL of whole blood). Please check your vial before the experiment. Since applications vary, the appropriate dilutions must be determined for individual use. |
|------------|--|

Data



Human peripheral blood lymphocytes are stained with PE/Cyanine7 Anti-Human CD11a Antibody[HI111] (filled gray histogram) or PE/Cyanine7 Mouse IgG1, κ Isotype Control (empty black histogram).

Preparation & Storage

| | |
|-----------------|---|
| Storage | Keep as concentrated solution. This product can be stored at 2-8°C for 12 months. Please protected from prolonged exposure to light and do not freeze. |
| Shipping | Ice bag |

Antigen Information

| | |
|------------------------|---|
| Alternate Names | CD11 antigen-like family member A;CD11a;Integrin alpha-L;Itgal;LFA-1A;Ly-15;Lymphocyte antigen 15 |
|------------------------|---|

For Research Use Only

Uniprot ID

P20701

Gene ID

3683

Background

CD11a is a 170-180 kD type I transmembrane glycoprotein also known as LFA-1 α chain and integrin α L subunit. CD11a non-covalently associates with integrin β 2 (CD18) to form LFA-1. It is expressed on all leukocytes, including B and T lymphocytes, monocytes, macrophages, neutrophils, basophils and eosinophils. It is absent on non-hematopoietic tissues and platelets. CD11a plays a central role in leukocyte cell-cell interactions and is important in lymphocyte costimulation. CD11a/CD18 binds to ICAM-1 (CD54), ICAM-2 (CD102), and ICAM-3 (CD50).

For Research Use Only