

Recombinant Human ALDOA protein (His tag)

Catalog Number:PDEH100148



Note: Centrifuge before opening to ensure complete recovery of vial contents.

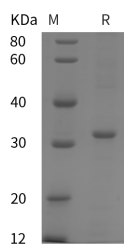
Description

Synonyms	Fructose-Bisphosphate Aldolase A;Lung Cancer Antigen NY-LU-1;Muscle-Type Aldolase;ALDOA;ALDA
Species	Human
Expression Host	E.coli
Sequence	Asp 18-Gly 273
Accession	P04075
Calculated Molecular Weight	28.0 kDa
Observed molecular weight	32 kDa
Tag	N-His

Properties

Purity	> 95 % as determined by reducing SDS-PAGE.
Endotoxin	Please contact us for more information.
Storage	Generally, lyophilized proteins are stable for up to 12 months when stored at -20 to -80°C. Reconstituted protein solution can be stored at 4-8°C for 2-7 days. Aliquots of reconstituted samples are stable at < -20°C for 3 months.
Shipping	This product is provided as lyophilized powder which is shipped with ice packs.
Formulation	Lyophilized from sterile PBS, pH 7.4. Normally 5 % - 8 % trehalose, mannitol and 0.01 % Tween80 are added as protectants before lyophilization. Please refer to the specific buffer information in the printed manual.
Reconstitution	Please refer to the printed manual for detailed information.

Data



> 95 % as determined by reducing SDS-PAGE.

Background

Fructose Bisphosphate Aldolase A (ALDOA) belongs to the class I fructose-bisphosphate aldolase family. ALDOA is a glycolytic enzyme that catalyzes the reversible conversion of fructose-1,6-bisphosphate to glyceraldehyde 3-phosphate and dihydroxyacetone phosphate. In vertebrates, three forms of this ubiquitous glycolytic enzyme are found, Aldolase A in muscle, Aldolase B in liver and aldolase C in brain. Aldolase A Interacts with SNX9 and WAS. Aldolase A deficiency has been associated with myopathy and hemolytic anemia. In addition, Aldolase A plays an important role in glycolysis and gluconeogenesis; it may also act as a scaffolding protein.

For Research Use Only

A Reliable Research Partner in Life Science and Medicine

Toll-free: 1-888-852-8623

Web: www.elabscience.com

Tel: 1-832-243-6086

Email: techsupport@elabscience.com

Fax: 1-832-243-6017