

# Recombinant Mouse FCRL1 Protein (aa 17-219, His Tag)



Catalog Number:PKSM041196

**Note:** Centrifuge before opening to ensure complete recovery of vial contents.

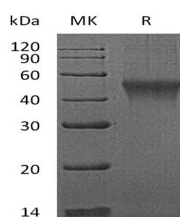
## Description

<b>Synonyms</b>	Fc receptor-like protein 1;FcR-like protein 1;FcRL1;BXMAS1-like protein 1;mBXMH1;Fc receptor homolog 1;FcRH1;moFcRH1;IFGP family protein 1;mIFGP1;CD307a;Bxmas1;Bxmh1;Bxmh1b;Fcrh1;Fcrh1l;Fcrh1s;Ifgp1 Protein
<b>Species</b>	Mouse
<b>Expression Host</b>	HEK293 Cells
<b>Sequence</b>	Ala17-Ser219
<b>Accession</b>	BAC30017.1
<b>Calculated Molecular Weight</b>	22.5 kDa
<b>Observed molecular weight</b>	40-60 kDa
<b>Tag</b>	C-His

## Properties

<b>Purity</b>	> 95 % as determined by reducing SDS-PAGE.
<b>Endotoxin</b>	< 1.0 EU per µg of the protein as determined by the LAL method.
<b>Storage</b>	Generally, lyophilized proteins are stable for up to 12 months when stored at -20 to -80°C. Reconstituted protein solution can be stored at 4-8°C for 2-7 days. Aliquots of reconstituted samples are stable at < -20°C for 3 months.
<b>Shipping</b>	This product is provided as lyophilized powder which is shipped with ice packs.
<b>Formulation</b>	Lyophilized from a 0.2 µm filtered solution of PBS, pH 7.4. Normally 5 % - 8 % trehalose, mannitol and 0.01 % Tween80 are added as protectants before lyophilization. Please refer to the specific buffer information in the printed manual.
<b>Reconstitution</b>	Please refer to the printed manual for detailed information.

## Data



> 95 % as determined by reducing SDS-PAGE.

## Background

Mouse Fc receptor-like protein 1 (FCRL1) is a single-pass type I membrane protein. It is expressed in B-cells at the various stages of differentiation. Mouse FCRL1 consists of a 203 amino acid (aa) extracellular domain (ECD) with two Ig-like domains, a 21 aa transmembrane segment, and a 103 aa cytoplasmic domain with two immunotyrosine activation motifs (ITAMs). FCRL1 is likely not a receptor for immunoglobulin. It may function as an activating coreceptor in B-cells and B-cells differentiation.

## For Research Use Only

A Reliable Research Partner in Life Science and Medicine

Toll-free: 1-888-852-8623

Web: [www.elabscience.com](http://www.elabscience.com)

Tel: 1-832-243-6086

Email: [techsupport@elabscience.com](mailto:techsupport@elabscience.com)

Fax: 1-832-243-6017