

# Recombinant Human DCX Protein (aa 45-150, GST Tag)



Catalog Number: PKSH030620

**Note:** Centrifuge before opening to ensure complete recovery of vial contents.

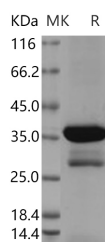
## Description

<b>Synonyms</b>	DBCN;DC;LISX;SCLH;XLIS
<b>Species</b>	Human
<b>Expression Host</b>	E.coli
<b>Sequence</b>	Ala 45-Val 150
<b>Accession</b>	O43602-2
<b>Calculated Molecular Weight</b>	39.4 kDa
<b>Observed molecular weight</b>	36 kDa
<b>Tag</b>	N-GST

## Properties

<b>Purity</b>	> 82 % as determined by reducing SDS-PAGE.
<b>Endotoxin</b>	Please contact us for more information.
<b>Storage</b>	Generally, lyophilized proteins are stable for up to 12 months when stored at -20 to -80°C. Reconstituted protein solution can be stored at 4-8°C for 2-7 days. Aliquots of reconstituted samples are stable at < -20°C for 3 months.
<b>Shipping</b>	This product is provided as lyophilized powder which is shipped with ice packs.
<b>Formulation</b>	Lyophilized from sterile 20mM Tris, 1mM DTT, 10% glycerol, pH 7.5 Normally 5 % - 8 % trehalose, mannitol and 0.01 % Tween80 are added as protectants before lyophilization. Please refer to the specific buffer information in the printed manual.
<b>Reconstitution</b>	Please refer to the printed manual for detailed information.

## Data



> 82 % as determined by reducing SDS-PAGE.

## Background

DCX (doublecortin, N-GST chimera) contains 2 doublecortin domains and belongs to the doublecortin family. It is highly expressed in neuronal cells of fetal brain, but not expressed in other fetal tissues. In the adult, it is highly expressed in the brain frontal lobe, but very low expression in other regions of brain, and not detected in heart, placenta, lung, liver, skeletal muscles, kidney and pancreas. DCX is a microtubule-associated protein required for initial steps of neuronal dispersion and cortex lamination during cerebral cortex development. It may act by competing with the putative neuronal protein kinase DCAMKL1 in binding to a target protein. DCX may in that way participate in a signaling pathway that is crucial for neuronal interaction before and during migration, possibly as part of a calcium ion-dependent signal transduction pathway. It may be part with LIS-1 of a overlapping, but distinct, signaling pathways that promote neuronal

## For Research Use Only

A Reliable Research Partner in Life Science and Medicine

Toll-free: 1-888-852-8623

Web: [www.elabscience.com](http://www.elabscience.com)

Tel: 1-832-243-6086

Email: [techsupport@elabscience.com](mailto:techsupport@elabscience.com)

Fax: 1-832-243-6017

# Recombinant Human DCX Protein (aa 45-150, GST Tag)

Catalog Number: PKSH030620

---



migration. Defects in DCX are the cause of lissencephaly X-linked type 1 and subcortical band heterotopia X-linked.

---

## For Research Use Only

A Reliable Research Partner in Life Science and Medicine

Toll-free: 1-888-852-8623

Web: [www.elabscience.com](http://www.elabscience.com)

Tel: 1-832-243-6086

Email: [techsupport@elabscience.com](mailto:techsupport@elabscience.com)

Fax: 1-832-243-6017